



Web: www.anbobio.com
www.dijibio.com
Order: order@dijibio.com
Tel: (86) 519 8805 0026

DIL-2 Antibody [#C11884]

Catalog Number: C11884

Concentration: 1mg/ml

Swiss-Prot No.: Q9ULW0

Other Names: C20orf1, C20orf2, DIL-2, DIL2,
Differentially expressed in lung cells 2, HCA519,
Hepatocellular carcinoma-associated antigen 519, Protein
FLS353, Restricted expression proliferation associated
protein 100, Targeting protein for Xklp2, p100

Storage/Stability: Store at -20°C/1 year

Form of Antibody: Rabbit IgG in phosphate buffered
saline (without Mg²⁺ and Ca²⁺), pH 7.4, 150mM NaCl,
0.02% sodium azide and 50% glycerol.

Immunogen: The antiserum was produced against

synthesized peptide derived from internal of human DIL-2.

Purification: The antibody was affinity-purified from
rabbit antiserum by affinity-chromatography using
epitope-specific immunogen.

Specificity: DIL-2 antibody detects endogenous levels of
total DIL-2 protein.

Reactivity: Human, Mouse

Applications: WB: 1:500~1:3000 IHC: 1:50~1:100

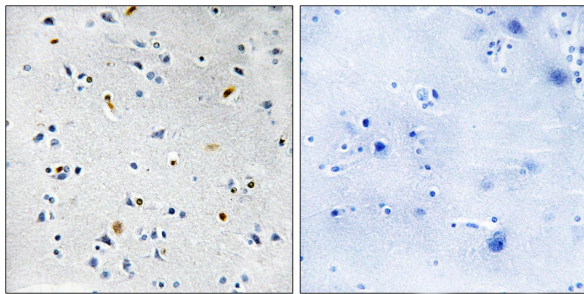
ELISA: 1:1000

References:

Manda R., Genomics 61:5-14(1999).

Zhang Y., Cytogenet. Cell Genet. 84:182-183(1999).

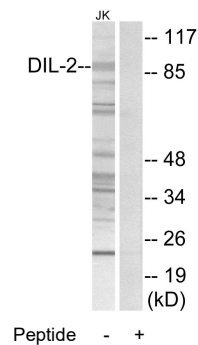
Wang Y., J. Immunol. 169:1102-1109(2002).



Peptide -

+

Immunohistochemistry analysis of paraffin-embedded
human brain tissue using DIL-2 antibody.



Peptide -

+

Western blot analysis of extracts from Jurkat cells, using
DIL-2 antibody.