



Web: www.anbobio.com
www.dijibio.com
Order: order@dijibio.com
Tel: (86) 519 8805 0026

ASC Antibody [#C11888]

Catalog Number: C11888

Concentration: 1mg/ml

Swiss-Prot No.: Q9ULZ3

Other Names: Apoptosis-associated speck-like protein containing a CARD, hASC, PYD and CARD domain-containing protein, Target of methylation-induced silencing 1, Caspase recruitment domain-containing protein 5, PYCARD, ASC, CARD5, TMS1

Storage/Stability: Store at -20°C/1 year

Form of Antibody: Rabbit IgG in phosphate buffered saline (without Mg²⁺ and Ca²⁺), pH 7.4, 150mM NaCl, 0.02% sodium azide and 50% glycerol.

Immunogen: The antiserum was produced against

synthesized peptide derived from internal of human ASC.

Purification: The antibody was affinity-purified from rabbit antiserum by affinity-chromatography using epitope-specific immunogen.

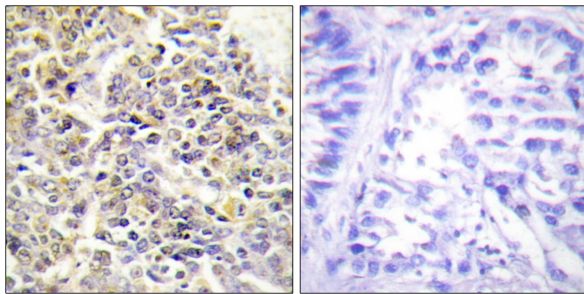
Specificity: ASC antibody detects endogenous levels of total ASC protein.

Reactivity: Human, Mouse, Rat

Applications: WB: 1:500~1:3000 IHC: 1:50~1:100
ELISA: 1:40000

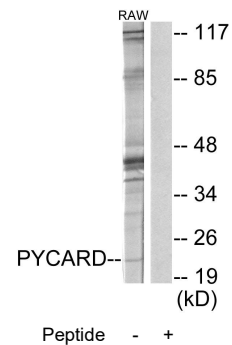
References:

Masumoto J., J. Biol. Chem. 274:33835-33838(1999).
Conway K.E., Cancer Res. 60:6236-6242(2000).
McConnell B.B., Cancer Res. 60:6243-6247(2000).



Peptide - +

Immunohistochemistry analysis of paraffin-embedded human lung carcinoma tissue using ASC antibody.



Western blot analysis of extracts from RAW264.7 cells, using ASC antibody.