



**Web:** [www.anbobio.com](http://www.anbobio.com)  
[www.dijibio.com](http://www.dijibio.com)  
**Order:** [order@dijibio.com](mailto:order@dijibio.com)  
**Tel:** (86) 519 8805 0026

## ZNF232 Antibody [#C11899]

**Catalog Number:** C11899

**Concentration:** 1mg/ml

**Swiss-Prot No.:** Q9UNY5

**Other Names:** Zinc finger protein 232, Zinc finger and SCAN domain-containing protein 11, ZNF232, ZSCAN11

**Storage/Stability:** Store at -20°C/1 year

**Form of Antibody:** Rabbit IgG in phosphate buffered saline (without Mg<sup>2+</sup> and Ca<sup>2+</sup>), pH 7.4, 150mM NaCl, 0.02% sodium azide and 50% glycerol.

**Immunogen:** The antiserum was produced against synthesized peptide derived from internal of human ZNF232.

**Purification:** The antibody was affinity-purified from

rabbit antiserum by affinity-chromatography using epitope-specific immunogen.

**Specificity:** ZNF232 antibody detects endogenous levels of total ZNF232 protein.

**Reactivity:** Human (Identities = 100%, Positives = 100%)

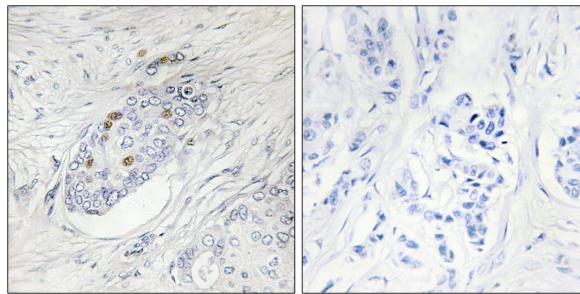
**Applications:** IHC: 1:50~1:100 ELISA: 1:1000

**References:**

Mavrogiannis L.A., Biochim. Biophys. Acta 1518:300-305(2001).

Sjoebloom T., Science 314:268-274(2006).

The MGC Project Team; Genome Res. 14:2121-2127(2004).



Peptide

-

+

Immunohistochemistry analysis of paraffin-embedded human breast carcinoma tissue, using ZNF232 antibody.