



Web: www.anbobio.com
www.dijibio.com
Order: order@dijibio.com
Tel: (86) 519 8805 0026

JIP3 Antibody [#C11903]

Catalog Number: C11903

Concentration: 1mg/ml

Swiss-Prot No.: Q9UPT6

Other Names: C-jun-amino-terminal kinase interacting protein 3, JIP-3, JIP3, JNK MAP kinase scaffold protein 3, JNK-interacting protein 3, JNK/SAPK-associated protein 1, JSAP1, KIAA1066, MAPK8IP3, Mitogen- activated protein kinase 8-interacting protein 3, SYD2, Sunday driver 2

Storage/Stability: Store at -20°C/1 year

Form of Antibody: Rabbit IgG in phosphate buffered saline (without Mg²⁺ and Ca²⁺), pH 7.4, 150mM NaCl, 0.02% sodium azide and 50% glycerol.

Immunogen: The antiserum was produced against synthesized peptide derived from internal of human JIP3.

Purification: The antibody was affinity-purified from rabbit antiserum by affinity-chromatography using epitope-specific immunogen.

Specificity: JIP3 antibody detects endogenous levels of total JIP3 protein.

Reactivity: Human, Mouse

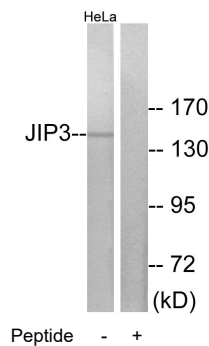
Applications: WB: 1:500~1:3000 IF: 1:100~1:500
ELISA: 1:20000

References:

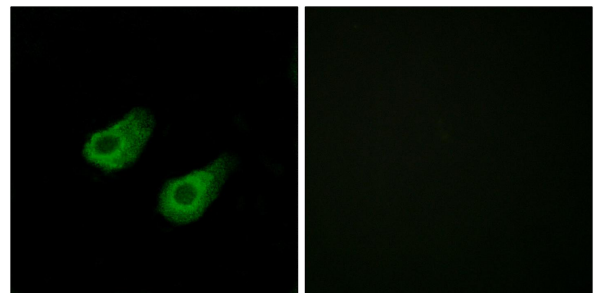
Hattori A., DNA Res. 7:357-366(2000).

Martin J., Nature 432:988-994(2004).

Beausoleil S.A., Proc. Natl. Acad. Sci. U.S.A. 101:12130-12135(2004).



Western blot analysis of extracts from HeLa cells, using JIP3 antibody.



Immunofluorescence analysis of HeLa cells, using JIP3 antibody.