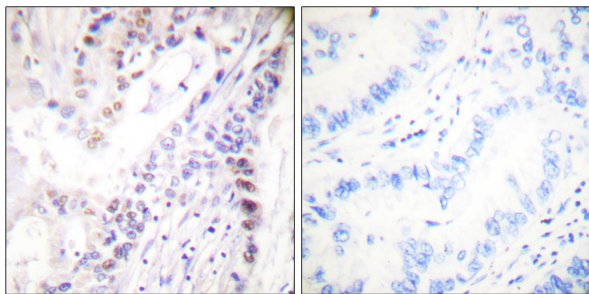




Web: [www.anbobio.com](http://www.anbobio.com)  
[www.dijibio.com](http://www.dijibio.com)  
Order: [order@dijibio.com](mailto:order@dijibio.com)  
Tel: (86) 519 8805 0026

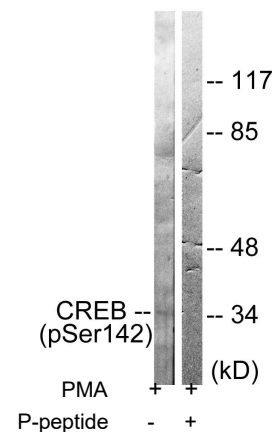
## CREB (Phospho-Ser142) Antibody [#A0006]

- Catalog Number:** A0006  
**Amount:** 50µg/50µl, 100µg/100µl, 200µg/200µl  
**Swiss-Prot No. :** P16220  
**All Names:** CREB-1, CREB1, cAMP-response element binding protein  
**All Sites:** Human: Ser142; Mouse: Ser142; Rat: Ser142  
**Form of Antibody:** Rabbit IgG in phosphate buffered saline (without Mg<sup>2+</sup> and Ca<sup>2+</sup>), pH 7.4, 150mM NaCl, 0.02% sodium azide and 50% glycerol.  
**Storage/Stability:** Store at -20°C/1 year  
**Immunogen:** The antiserum was produced against synthesized phosphopeptide derived from human CREB around the phosphorylation site of serine 142 (D-L-S<sup>P</sup>-S-D).  
**Purification:** The antibody was affinity-purified from rabbit antiserum by affinity-chromatography using epitope-specific phosphopeptide. The antibody against non-phosphopeptide was removed by chromatography using non-phosphopeptide corresponding to the phosphorylation site.  
**Specificity/Sensitivity:** CREB (phospho-Ser142) antibody detects endogenous levels of CREB only when phosphorylated at serine 142.  
**Reactivity:** Human, Mouse, Rat  
**Applications:** WB: 1:500~3000 IHC: 1:50~100  
IF: 1:100~1:500 ELISA: 1:40000  
**References:** Anjali Rajadhyaksha, J. Neurosci., Aug 1999; 19: 6348.  
Brian F. Clem, Endocrinology, Mar 2005; 146: 1348 - 1356.  
Boyoung Lee, J. Neurosci., Feb 2005; 25: 1137 - 1148.  
Lance Zirpel, J. Neurosci., Aug 2000; 20: 6267.

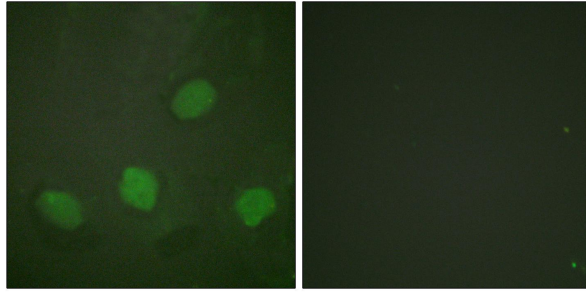


P-peptide - +

Immunohistochemical analysis of paraffin-embedded human lung carcinoma tissue using CREB (phospho-Ser142) antibody.



Western blot analysis of extracts from HeLa cells treated with PMA (125ng/ml, 30mins), using CREB (phospho-Ser142) antibody.



P-peptide

-

+

Immunofluorescence analysis of HeLa cells, using CREB (phospho-Ser142) antibody.