



**Web:** [www.anbobio.com](http://www.anbobio.com)  
[www.dijibio.com](http://www.dijibio.com)  
**Order:** [order@dijibio.com](mailto:order@dijibio.com)  
**Tel:** (86) 519 8805 0026

## FA7 (light chain, Cleaved-Arg212) Antibody [#L0259]

**Catalog Number:** L0259

**Concentration:** 1mg/ml

**Swiss-Prot No.:** P08709

**Other Names:** Coagulation factor VII [Precursor] ; EC 3.4.21.21; Serum prothrombin conversion accelerator; SPCA; Proconvertin; Eptacog alfa; Factor VII light chain; Factor VII heavy chain; F7

**Storage/Stability:** Store at -20°C/1 year

**Form of Antibody:** Rabbit IgG in phosphate buffered saline (without Mg<sup>2+</sup> and Ca<sup>2+</sup>), pH 7.4, 150mM NaCl, 0.02% sodium azide and 50% glycerol.

**Immunogen:** The antiserum was produced against synthesized peptide derived from human FA7.

**Purification:** The antibody was affinity-purified from

rabbit antiserum by affinity-chromatography using epitope-specific immunogen.

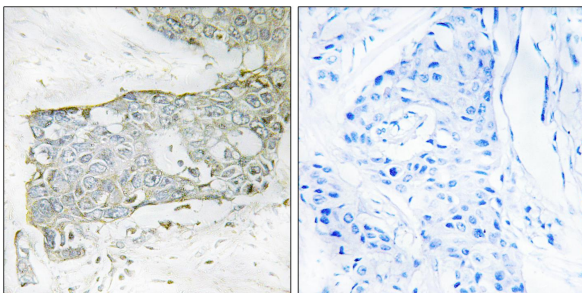
**Specificity:** FA7 (light chain, Cleaved-Arg212) antibody detects endogenous levels of fragment of activated FA7 resulting from cleavage adjacent to Arg212.

**Reactivity:** Human

**Applications:** WB: 1:500~1:3000 IHC: 1:50~1:100  
ELISA: 1:20000

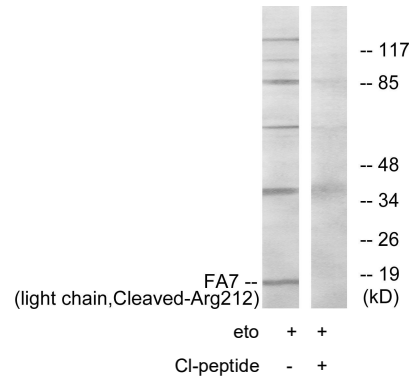
**References:**

Hagen F.S., Proc. Natl. Acad. Sci. U.S.A. 83:2412-2416(1986).  
O'Hara P.J., Proc. Natl. Acad. Sci. U.S.A. 84:5158-5162(1987).  
Sabater-Lleal M., Hum. Genet. 118:741-751(2006).



Cl-peptide - +

Immunohistochemistry analysis of paraffin-embedded human breast carcinoma tissue using FA7 (light chain, Cleaved-Arg212) antibody.



Western blot analysis of extracts from Jurkat cells, treated with eto (25uM, 24hours), using FA7 (light chain, Cleaved-Arg212) antibody.