



**Web:** [www.anbobio.com](http://www.anbobio.com)  
[www.dijibio.com](http://www.dijibio.com)  
**Order:** [order@dijibio.com](mailto:order@dijibio.com)  
**Tel:** (86) 519 8805 0026

## ITGA6 (light chain, Cleaved-Glu942) Antibody [#L0282]

**Catalog Number:** L0282

**Concentration:** 1mg/ml

**Swiss-Prot No.:** P23229

**Other Names:** Integrin alpha-6 [Precursor], VLA-6, CD49f antigen, Integrin alpha-6 heavy chain, Integrin alpha-6 light chain, ITGA6

**Storage/Stability:** Store at -20°C/1 year

**Form of Antibody:** Rabbit IgG in phosphate buffered saline (without Mg<sup>2+</sup> and Ca<sup>2+</sup>), pH 7.4, 150mM NaCl, 0.02% sodium azide and 50% glycerol.

**Immunogen:** The antiserum was produced against synthesized peptide derived from human ITGA6.

**Purification:** The antibody was affinity-purified from

rabbit antiserum by affinity-chromatography using epitope-specific immunogen.

**Specificity:** ITGA6 (light chain, Cleaved-Glu942) antibody detects endogenous levels of fragment of activated ITGA6 resulting from cleavage adjacent to Glu942.

**Reactivity:** Human

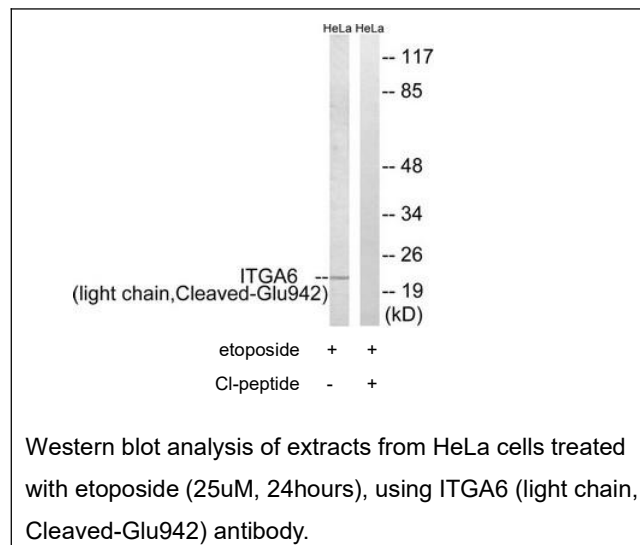
**Applications:** WB: 1:500~1:3000 ELISA: 1:10000

**References:**

Tamura R.N., J. Cell Biol. 111:1593-1604(1990).

Hogervorst F., Eur. J. Biochem. 199:425-433(1991).

Starr L., BioTechniques 13:612-618(1992).



**For Research Use Only**