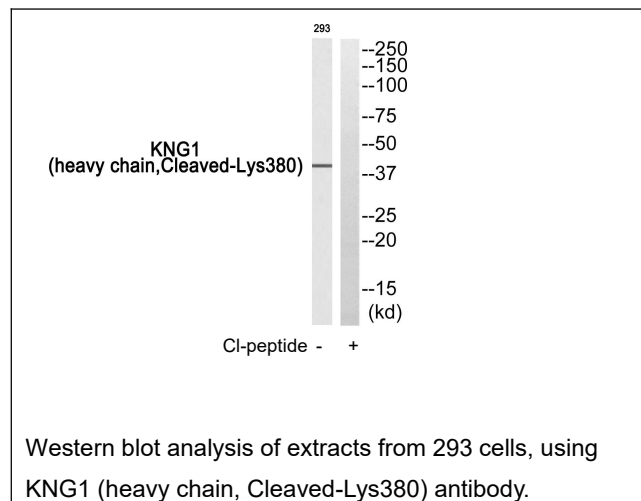




Web: www.anbobio.com
www.dijibio.com
Order: order@dijibio.com
Tel: (86) 519 8805 0026

KNG1 (heavy chain, Cleaved-Lys380) Antibody [#L0310]

- Catalog Number:** L0310
Amount: 50µg/50µl, 100µg/100µl, 200µg/200µl
Swiss-Prot No. : P01042
All Names: Alpha-2-thiol proteinase inhibitor; BDK; Bradykinin; Fitzgerald factor; High molecular weight kininogen; HMWK; Ile-Ser-Bradykinin; Kallidin I; Kallidin II; kininogen 1; Kininogen-1; Kininogen-1 heavy chain; Kininogen-1 light chain; KNG; KNG1; Low molecular weight growth-promoting factor; Lysyl-bradykinin; T-kinin; Williams-Fitzgerald-Flaujeac factor
All Sites: Human:Lys380
Form of Antibody: Rabbit IgG in phosphate buffered saline (without Mg²⁺ and Ca²⁺), pH 7.4, 150mM NaCl, 0.02% sodium azide and 50% glycerol.
Storage/Stability: Store at -20°C/1 year
Immunogen: The antiserum was produced against synthesized peptide derived from human KNG1.
Purification: The antibody was affinity-purified from rabbit antiserum by affinity-chromatography using epitope-specific immunogen.
Specificity/Sensitivity: KNG1 (heavy chain, Cleaved-Lys380) antibody detects endogenous levels of fragment of activated KNG1 resulting from cleavage adjacent to Lys380.
Reactivity: Human
Applications: WB: 1:500~1:3000 ELISA: 1:10000
References: Ohkubo I., Biochemistry 23:5691-5697(1984) [PubMed: 6441591].
Takagaki Y., J. Biol. Chem. 260:8601-8609(1985) [PubMed: 2989293].
Ota T., Nat. Genet. 36:40-45(2004) [PubMed: 14702039].



For Research Use Only