



**Web:** [www.anbobio.com](http://www.anbobio.com)  
[www.dijibio.com](http://www.dijibio.com)  
**Order:** [order@dijibio.com](mailto:order@dijibio.com)  
**Tel:** (86) 519 8805 0026

## PPGB (32k, Cleaved-Arg326) Antibody [#L0313]

**Catalog Number:** L0313

**Concentration:** 1mg/ml

**Swiss-Prot No.:** P10619

**Other Names:** Lysosomal protective protein [Precursor], EC 3.4.16.5, Cathepsin A, Carboxypeptidase C, Protective protein for beta-galactosidase, Lysosomal protective protein 32 kDa chain, Lysosomal protective protein 20 kDa chain, CTSA, PPGB

**Storage/Stability:** Store at -20°C/1 year

**Form of Antibody:** Rabbit IgG in phosphate buffered saline (without Mg<sup>2+</sup> and Ca<sup>2+</sup>), pH 7.4, 150mM NaCl, 0.02% sodium azide and 50% glycerol.

**Immunogen:** The antiserum was produced against

synthesized peptide derived from human PPGB.

**Purification:** The antibody was affinity-purified from rabbit antiserum by affinity-chromatography using epitope-specific immunogen.

**Specificity:** PPGB (32k, Cleaved-Arg326) antibody detects endogenous levels of fragment of activated PPGB resulting from cleavage adjacent to Arg326.

**Reactivity:** Human, Mouse

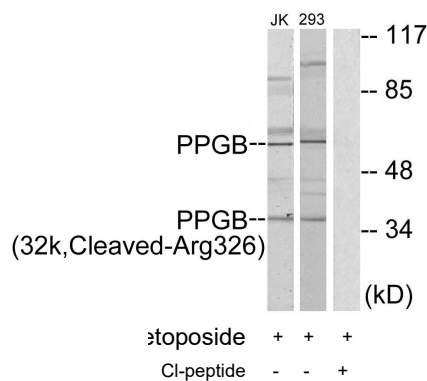
**Applications:** WB: 1:500~1:3000 ELISA: 1:10000

**References:**

Galjart N.J., Cell 54:755-764(1988).

Deloukas P., Nature 414:865-871(2001).

Jackman H.L., J. Biol. Chem. 265:11265-11272(1990).



Western blot analysis of extracts from Jurkat cells and 293 cells, treated with etoposide (25uM, 1hour), using PPGB (32k, Cleaved-Arg326) antibody.