



**Web:** [www.anbobio.com](http://www.anbobio.com)  
[www.dijibio.com](http://www.dijibio.com)  
**Order:** [order@dijibio.com](mailto:order@dijibio.com)  
**Tel:** (86) 519 8805 0026

## MMP1 (Cleaved-Pro269) Antibody [#L0315]

**Catalog Number:** L0315

**Concentration:** 1mg/ml

**Swiss-Prot No.:** P03956

**Other Names:** 22 kDa interstitial collagenase; 27 kDa interstitial collagenase; CLG; CLGN; Fibroblast collagenase; Interstitial collagenase; matrix metalloproteinase 1 (interstitial collagenase); matrix metalloproteinase 1; Matrix metalloproteinase-1; MMP-1; MMP1

**Storage/Stability:** Store at -20°C/1 year

**Form of Antibody:** Rabbit IgG in phosphate buffered saline (without Mg<sup>2+</sup> and Ca<sup>2+</sup>), pH 7.4, 150mM NaCl, 0.02% sodium azide and 50% glycerol.

**Immunogen:** The antiserum was produced against

synthesized peptide derived from human MMP1.

**Purification:** The antibody was affinity-purified from rabbit antiserum by affinity-chromatography using epitope-specific immunogen.

**Specificity:** MMP1 (Cleaved-Pro269) antibody detects endogenous levels of fragment of activated MMP1 resulting from cleavage adjacent to Pro269.

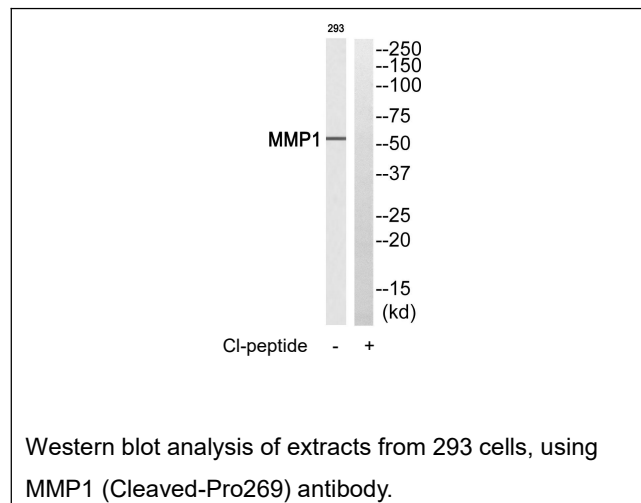
**Reactivity:** Human

**Applications:** WB: 1:500~1:3000 ELISA: 1:1000

**References:**

Templeton N.S., Cancer Res. 50:5431-5437(1990).

Whitham S.E., Biochem. J. 240:913-916(1986).



**For Research Use Only**