



Web: www.anbobio.com

www.dijibio.com

Order: order@dijibio.com

Tel: (86) 519 8805 0026

Neuropsin (Cleaved-Val33) Antibody [#L0345]

Catalog Number: L0345

Concentration: 1mg/ml

Swiss-Prot No.: O60259

Other Names: Kallikrein-8 [Precursor], EC 3.4.21.118, hK8, Neuropsin, NP, Ovasin, Serine protease TADG-14, Tumor-associated differentially expressed gene 14 protein, Serine protease 19, KLK8, NRPN, PRSS19, TADG14, UNQ283/PRO322

Storage/Stability: Store at -20°C/1 year

Form of Antibody: Rabbit IgG in phosphate buffered saline (without Mg²⁺ and Ca²⁺), pH 7.4, 150mM NaCl, 0.02% sodium azide and 50% glycerol.

Immunogen: The antiserum was produced against

synthesized peptide derived from human Neuropsin.

Purification: The antibody was affinity-purified from rabbit antiserum by affinity-chromatography using epitope-specific immunogen.

Specificity: Neuropsin (Cleaved-Val33) antibody detects endogenous levels of fragment of activated Neuropsin resulting from cleavage adjacent to Val33.

Reactivity: Human

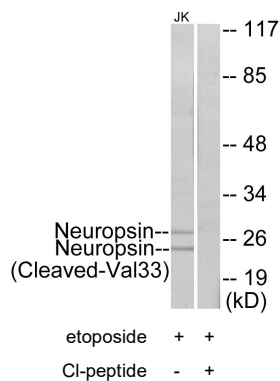
Applications: WB: 1:500~1:3000 ELISA: 1:10000

References:

Yoshida S., Gene 213:9-16(1998).

Underwood L.J., Cancer Res. 59:4435-4439(1999).

Mitsui S., Eur. J. Biochem. 260:627-634(1999).



Western blot analysis of extracts from Jurkat cells, treated with etoposide (25uM, 24hours), using Neuropsin (Cleaved-Val33) antibody.