



**Web:** [www.anbobio.com](http://www.anbobio.com)  
[www.dijibio.com](http://www.dijibio.com)  
**Order:** [order@dijibio.com](mailto:order@dijibio.com)  
**Tel:** (86) 519 8805 0026

## PARP (Cleaved-Gly215) Antibody [#L0366]

**Catalog Number:** L0366

**Concentration:** 1mg/ml

**Swiss-Prot No.:** P09874

**Other Names:** Poly [ADP-ribose] polymerase 1, EC 2.4.2.30, PARP-1, ADPRT, NAD(+)

ADP-ribosyltransferase 1, Poly[ADP-ribose] synthetase 1, PARP1, ADPRT, PPOL

**Storage/Stability:** Store at -20°C/1 year

**Form of Antibody:** Rabbit IgG in phosphate buffered saline (without Mg<sup>2+</sup> and Ca<sup>2+</sup>), pH 7.4, 150mM NaCl, 0.02% sodium azide and 50% glycerol.

**Immunogen:** The antiserum was produced against synthesized peptide derived from human PARP.

**Purification:** The antibody was affinity-purified from rabbit antiserum by affinity-chromatography using epitope-specific immunogen.

**Specificity:** PARP (Cleaved-Gly215) antibody detects endogenous levels of fragment of activated PARP resulting from cleavage adjacent to Gly215.

**Reactivity:** Human

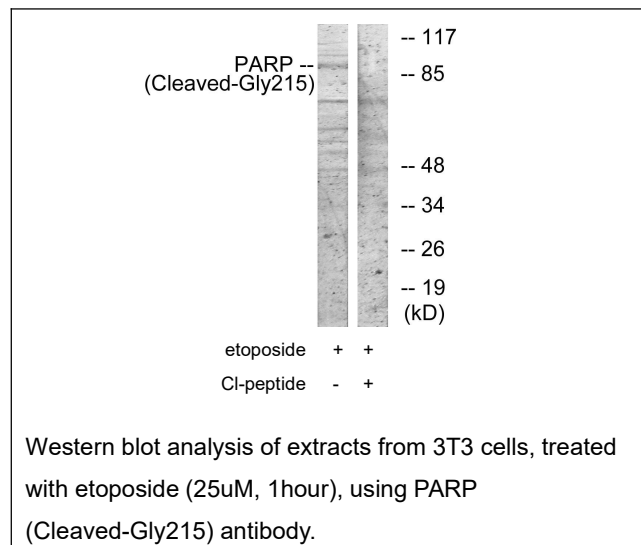
**Applications:** WB: 1:500~1:3000 ELISA: 1:1000

**References:**

Auer B., DNA 8:575-580(1989).

Uchida K., Biochem. Biophys. Res. Commun. 148:617-622(1987).

Kurosaki T., J. Biol. Chem. 262:15990-15997(1987).



**For Research Use Only**