



Web: www.anobio.com
www.dijibio.com
Order: order@dijibio.com
Tel: (86) 519 8805 0026

GIT1 Antibody [#C11944]

Catalog Number: C11944

Concentration: 1mg/ml

Swiss-Prot No.: Q9Y2X7

Other Names: ARF GTPase-activating protein GIT1, G protein-coupled receptor kinase- interactor 1, similar to G protein-coupled receptor kinase-interactor 1; G protein-coupled receptor kinase-associated ADP ribosylation factor GTPase-activating protein

Storage/Stability: Store at -20°C/1 year

Form of Antibody: Rabbit IgG in phosphate buffered saline (without Mg²⁺ and Ca²⁺), pH 7.4, 150mM NaCl, 0.02% sodium azide and 50% glycerol.

Immunogen: The antiserum was produced against synthesized peptide derived from C-terminal of human GIT1.

Purification: The antibody was affinity-purified from

rabbit antiserum by affinity-chromatography using epitope-specific immunogen.

Specificity: GIT1 antibody detects endogenous levels of total GIT1 protein.

Reactivity: Human (Identities = 100%, Positives = 100%);
Mouse (Identities = 100%, Positives = 100%);
Rat (Identities = 100%, Positives = 100%)

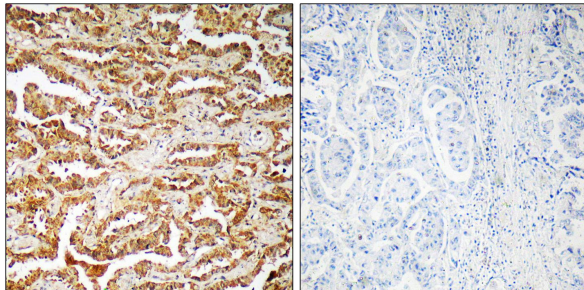
Applications: WB: 1:500~1:3000 IHC: 1:50~1:100
ELISA: 1:20000

References:

Premont R.T., J. Biol. Chem. 275:22373-22380(2000).

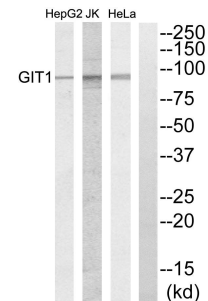
The MGC Project Team, Genome Res. 14:2121-2127(2004).

Premont R.T., Proc. Natl. Acad. Sci. U.S.A. 95:14082-14087(1998).



Peptide - +

Immunohistochemistry analysis of paraffin-embedded human lung carcinoma tissue, using GIT1 antibody.



Peptide - - - +

Western blot analysis of extracts from HeLa cells, Jurkat cells and HepG2 cells, using GIT1 antibody.