



**Web:** [www.anbobio.com](http://www.anbobio.com)  
[www.dijibio.com](http://www.dijibio.com)  
**Order:** [order@dijibio.com](mailto:order@dijibio.com)  
**Tel:** (86) 519 8805 0026

## EID1 Antibody [#C11984]

**Catalog Number:** C11984

**Concentration:** 1mg/ml

**Swiss-Prot No.:** Q9Y6B2

**Other Names:** EP300-interacting inhibitor of differentiation 1, EID-1, E1A-like inhibitor of differentiation 1, CREBBP/EP300 inhibitory protein 1, 21 kDa pRb-associated protein, EID1, C15orf3, CRI1, RBP21, PNAS-22, PTD014

**Storage/Stability:** Store at -20°C/1 year

**Form of Antibody:** Rabbit IgG in phosphate buffered saline (without Mg<sup>2+</sup> and Ca<sup>2+</sup>), pH 7.4, 150mM NaCl, 0.02% sodium azide and 50% glycerol.

**Immunogen:** The antiserum was produced against

synthesized peptide derived from internal of human EID1.

**Purification:** The antibody was affinity-purified from rabbit antiserum by affinity-chromatography using epitope-specific immunogen.

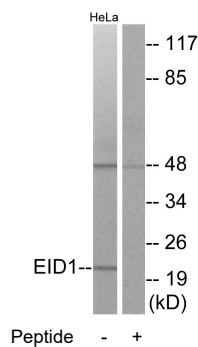
**Specificity:** EID1 antibody detects endogenous levels of total EID1 protein.

**Reactivity:** Human

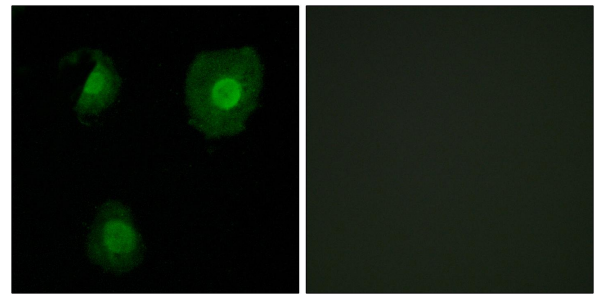
**Applications:** WB: 1:500~1:3000 IF: 1:100~1:500  
ELISA: 1:10000

**References:**

MacLellan W.R., Mol. Cell. Biol. 20:8903-8915(2000).  
Wen H., Ao S.; Gene 263:85-92(2001).  
Ota T., Nat. Genet. 36:40-45(2004).



Western blot analysis of extracts from HeLa cells, using EID1 antibody.



Immunofluorescence analysis of A549 cells, using EID1 antibody.