



Web: www.anbobio.com

www.dijibio.com

Order: order@dijibio.com

Tel: (86) 519 8805 0026

14-3-3 η Antibody [#C12003]

Catalog Number: C12003

Concentration: 1mg/ml

Swiss-Prot No.: Q04917

Other Names: 14-3-3 protein eta, Protein AS1, YWHAH, YWHA1

Storage/Stability: Store at -20°C/1 year

Form of Antibody: Rabbit IgG in phosphate buffered saline (without Mg²⁺ and Ca²⁺), pH 7.4, 150mM NaCl, 0.02% sodium azide and 50% glycerol.

Immunogen: The antiserum was produced against synthesized peptide derived from internal of human 14-3-3 η .

Purification: The antibody was affinity-purified from

rabbit antiserum by affinity-chromatography using epitope-specific immunogen.

Specificity: 14-3-3 η antibody detects endogenous levels of total 14-3-3 η protein.

Reactivity: Human, Mouse, Rat

Applications: WB: 1:500~1:3000 IF: 1:100~1:500

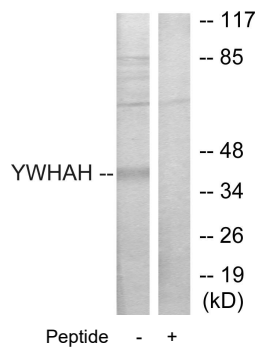
ELISA: 1:5000

References:

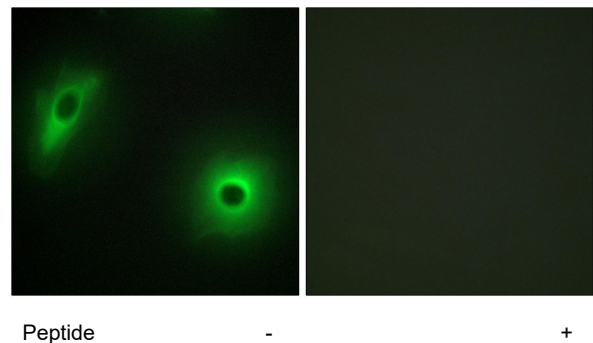
Swanson K.D., Biochim. Biophys. Acta 1216:145-148(1993).

Ichimura-Ohshima Y., J. Neurosci. Res. 31:600-605(1992).

Muratake T., Mol. Neurobiol. 11:223-230(1995).



Western blot analysis of extracts from Jurkat cells, using 14-3-3 η antibody.



Immunofluorescence analysis of HeLa cells, using 14-3-3 η antibody.