



Web: www.anbobio.com
www.dijibio.com
Order: order@dijibio.com
Tel: (86) 519 8805 0026

ADCY8 Antibody [#C12038]

Catalog Number: C12038

Concentration: 1mg/ml

Swiss-Prot No.: P40145

Other Names: Adenylate cyclase type 8, EC 4.6.1.1, Adenylate cyclase type VIII, ATP pyrophosphate-lyase 8, Adenylyl cyclase 8, Ca(2+)/calmodulin-activated adenylyl cyclase, ADCY8

Storage/Stability: Store at -20°C/1 year

Form of Antibody: Rabbit IgG in phosphate buffered saline (without Mg²⁺ and Ca²⁺), pH 7.4, 150mM NaCl, 0.02% sodium azide and 50% glycerol.

Immunogen: The antiserum was produced against synthesized peptide derived from internal of human ADCY8.

Purification: The antibody was affinity-purified from

rabbit antiserum by affinity-chromatography using epitope-specific immunogen.

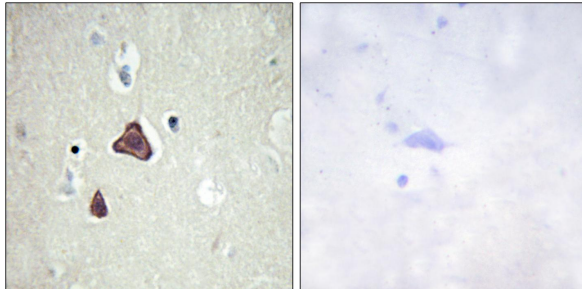
Specificity: ADCY8 antibody detects endogenous levels of total ADCY8 protein.

Reactivity: Human (Identities = 100%, Positives = 100%);
Mouse (Identities = 100%, Positives = 100%);
Rat (Identities = 100%, Positives = 100%)

Applications: IHC: 1:50~1:100 IF: 1:100~1:500
ELISA: 1:40000

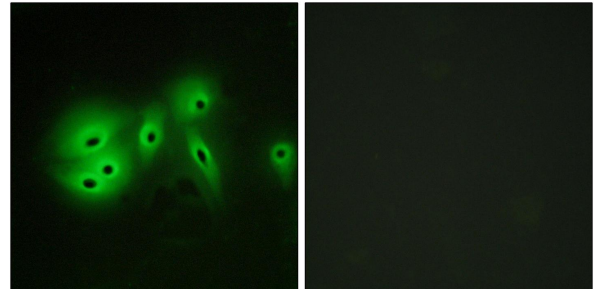
References:

Defer N., FEBS Lett. 351:109-113(1994).
Parma J., Biochem. Biophys. Res. Commun. 179:455-462(1991).
Sjoebloom T., Science 314:268-274(2006).



Peptide - +

Immunohistochemistry analysis of paraffin-embedded human brain tissue, using ADCY8 antibody.



Peptide - +

Immunofluorescence analysis of A549 cells, using ADCY8 antibody.