



Web: www.anbobio.com
www.dijibio.com
Order: order@dijibio.com
Tel: (86) 519 8805 0026

CADM4 Antibody [#C12111]

Catalog Number: C12111

Concentration: 1mg/ml

Swiss-Prot No.: Q8NFZ8

Other Names: Cell adhesion molecule 4 [Precursor], Immunoglobulin superfamily member 4C, Nectin-like protein 4, TSLC1-like protein 2, CADM4, IGSF4C, NECL4, TSL2

Storage/Stability: Store at -20°C/1 year

Form of Antibody: Rabbit IgG in phosphate buffered saline (without Mg²⁺ and Ca²⁺), pH 7.4, 150mM NaCl, 0.02% sodium azide and 50% glycerol.

Immunogen: The antiserum was produced against synthesized peptide derived from internal of human

CADM4.

Purification: The antibody was affinity-purified from rabbit antiserum by affinity-chromatography using epitope-specific immunogen.

Specificity: CADM4 antibody detects endogenous levels of total CADM4 protein.

Reactivity: Human, Mouse, Rat

Applications: WB: 1:500~1:3000 IF: 1:100~1:500

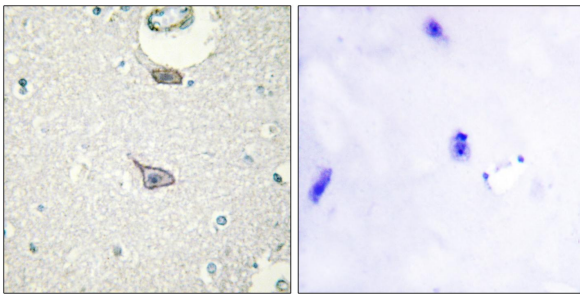
IHC: 1:50~1:100 ELISA: 1:20000

References:

Fukuhara H., *Oncogene* 20:5401-5407(2001).

Grimwood J., *Nature* 428:529-535(2004)0.

Williams Y.N., *Oncogene* 25:1446-1453(2006).

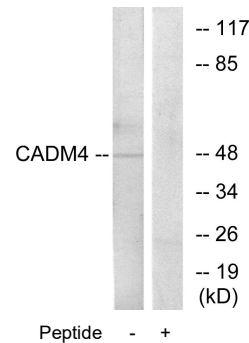


Peptide

-

+

Immunohistochemistry analysis of paraffin-embedded human brain tissue using CADM4 antibody.



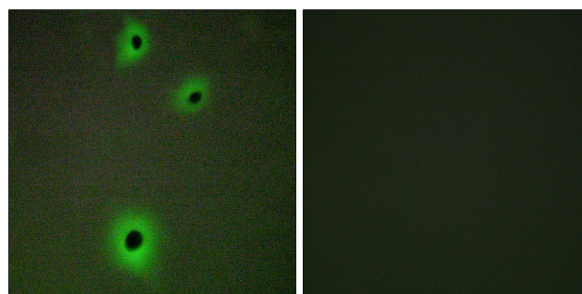
CADM4

Peptide

-

+

Western blot analysis of extracts from RAW264.7 cells, using CADM4 antibody.



Peptide

-

+

Immunofluorescence analysis of A549 cells, using CADM4 antibody.