



Web: www.anbobio.com
www.dijibio.com
Order: order@dijibio.com
Tel: (86) 519 8805 0026

CDCA3 Antibody [#C12174]

Catalog Number: C12174

Concentration: 1mg/ml

Swiss-Prot No.: Q99618

Other Names: Cell division cycle-associated protein 3, Trigger of mitotic entry protein 1, TOME-1, Gene-rich cluster protein C8, CDCA3, C8, GRCC8, TOME1

Storage/Stability: Store at -20°C/1 year

Form of Antibody: Rabbit IgG in phosphate buffered saline (without Mg²⁺ and Ca²⁺), pH 7.4, 150mM NaCl, 0.02% sodium azide and 50% glycerol.

Immunogen: The antiserum was produced against synthesized peptide derived from C-terminal of human CDCA3.

Purification: The antibody was affinity-purified from rabbit antiserum by affinity-chromatography using epitope-specific immunogen.

Specificity: CDCA3 antibody detects endogenous levels of total CDCA3 protein.

Reactivity: Human, Mouse, Rat

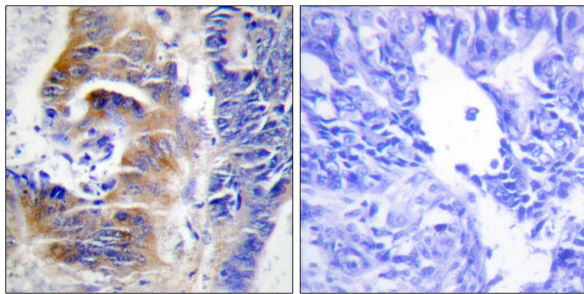
Applications: WB: 1:500~1:3000 IHC: 1:50~1:100
ELISA: 1:1000

References:

Walker M.G., Curr. Cancer Drug Targets 1:73-83(2001).

Ansari-Lari M.A., Genome Res. 7:268-280(1997).

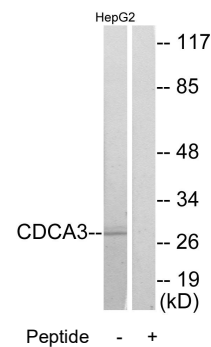
Olsen J.V., Cell 127:635-648(2006).



Peptide -

+

Immunohistochemistry analysis of paraffin-embedded human colon carcinoma tissue using CDCA3 antibody.



Western blot analysis of extracts from HepG2 cells, using CDCA3 antibody.