



**Web:** [www.anbio.com](http://www.anbio.com)  
[www.dijibio.com](http://www.dijibio.com)  
**Order:** [order@dijibio.com](mailto:order@dijibio.com)  
**Tel:** (86) 519 8805 0026

## CDON Antibody [#C12181]

**Catalog Number:** C12181

**Concentration:** 1mg/ml

**Swiss-Prot No.:** Q4KMG0

**Other Names:** Cell adhesion

molecule-related/down-regulated by oncogenes , CDON,  
CDO

**Storage/Stability:** Store at -20°C/1 year

**Form of Antibody:** Rabbit IgG in phosphate buffered  
saline (without Mg<sup>2+</sup> and Ca<sup>2+</sup>), pH 7.4, 150mM NaCl,  
0.02% sodium azide and 50% glycerol.

**Immunogen:** The antiserum was produced against  
synthesized peptide derived from internal of human

CDON.

**Purification:** The antibody was affinity-purified from  
rabbit antiserum by affinity-chromatography using  
epitope-specific immunogen.

**Specificity:** CDON antibody detects endogenous levels  
of total CDON protein.

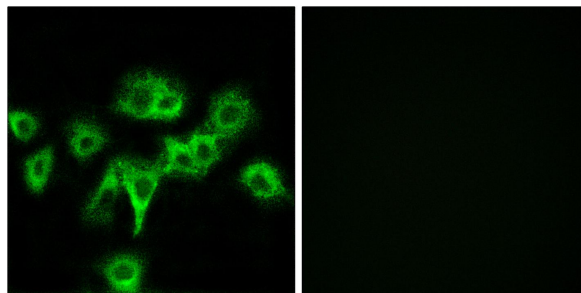
**Reactivity:** Human (Identities = 100%, Positives = 100%)

**Applications:** IF: 1:100~1:500 ELISA: 1:10000

**References:**

Kang J.-S., J. Cell Biol. 138:203-213(1997).

The MGC Project Team, Genome Res.  
14:2121-2127(2004).



Peptide

-

+

Immunofluorescence analysis of MCF-7 cells, using  
CDON antibody.