



Web: www.anbobio.com
www.dijibio.com
Order: order@dijibio.com
Tel: (86) 519 8805 0026

CENPA Antibody [#C12186]

Catalog Number: C12186

Concentration: 1mg/ml

Swiss-Prot No.: P49450

Other Names: CENA, CENP-A, Centromere autoantigen A, Centromere protein A

Storage/Stability: Store at -20°C/1 year

Form of Antibody: Rabbit IgG in phosphate buffered saline (without Mg²⁺ and Ca²⁺), pH 7.4, 150mM NaCl, 0.02% sodium azide and 50% glycerol.

Immunogen: The antiserum was produced against synthesized peptide derived from internal of human CENPA.

Purification: The antibody was affinity-purified from rabbit antiserum by affinity-chromatography using epitope-specific immunogen.

Specificity: CENPA antibody detects endogenous levels of total CENPA protein.

Reactivity: Human (Identities = 100%, Positives = 100%)

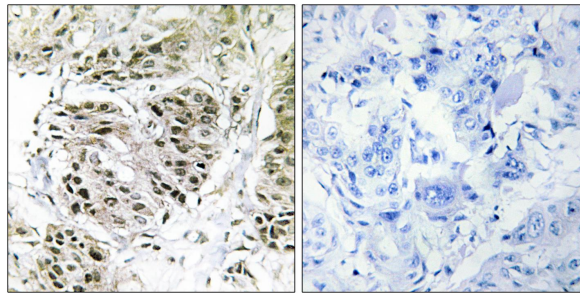
Applications: IHC: 1:50~1:100 ELISA: 1:5000

References:

Sullivan K.F., J. Cell Biol. 127:581-592(1994).

Hillier L.W., Nature 434:724-731(2005).

Shelby R.D., J. Cell Biol. 136:501-513(1997).



Peptide

-

+

Immunohistochemistry analysis of paraffin-embedded human breast carcinoma tissue using CENPA antibody.