



**Web:** [www.anbobio.com](http://www.anbobio.com)  
[www.dijibio.com](http://www.dijibio.com)  
**Order:** [order@dijibio.com](mailto:order@dijibio.com)  
**Tel:** (86) 519 8805 0026

## SSTR1 Antibody [#G744]

**Catalog Number:** G744

**Concentration:** 1mg/ml

**Swiss-Prot No.:** P30872

**Other Names:** Somatostatin receptor type 1; SS1R; SRIF-2

**Storage/Stability:** Store at -20°C/1 year

**Form of Antibody:** Rabbit IgG in phosphate buffered saline (without Mg<sup>2+</sup> and Ca<sup>2+</sup>), pH 7.4, 150mM NaCl, 0.02% sodium azide and 50% glycerol.

**Immunogen:** The antiserum was produced against synthesized peptide derived from internal of human SSTR1.

**Purification:** The antibody was affinity-purified from

rabbit antiserum by affinity-chromatography using epitope-specific immunogen.

**Specificity:** SSTR1 antibody detects endogenous levels of total SSTR1 protein.

**Reactivity:** Human, Mouse, Rat

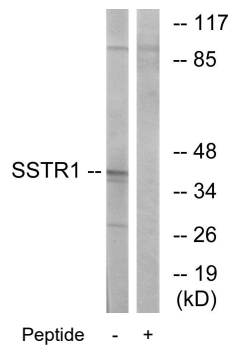
**Applications:** WB: 1:500~1:3000 IF: 1:100~1:500  
ELISA: 1:20000

**References:**

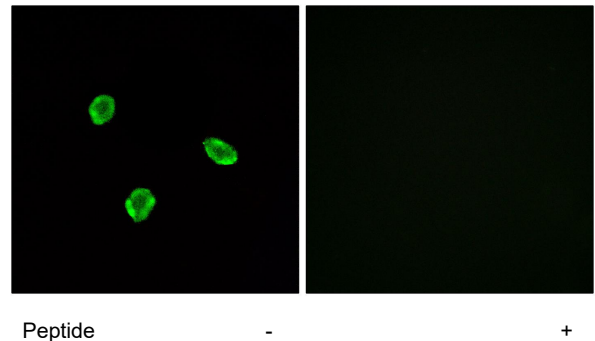
Yamada Y., Proc. Natl. Acad. Sci. U.S.A. 89:251-255(1992).

The MGC Project Team; Genome Res. 14:2121-2127(2004).

Schwaerzler A., J. Biol. Chem. 275:9557-9562(2000).



Western blot analysis of extracts from COS-7 cells, using SSTR1 antibody.



Immunofluorescence analysis of A549 cells, using SSTR1 antibody.