



Web: www.anbobio.com
www.dijibio.com
Order: order@dijibio.com
Tel: (86) 519 8805 0026

TAS2R10 Antibody [#G750]

Catalog Number: G750

Concentration: 1mg/ml

Swiss-Prot No.: Q9NYW0

Other Names: Taste receptor type 2 member 10; T2R10;
Taste receptor family B member 2; TRB2; TAS2R10

Storage/Stability: Store at -20°C/1 year

Form of Antibody: Rabbit IgG in phosphate buffered saline (without Mg²⁺ and Ca²⁺), pH 7.4, 150mM NaCl, 0.02% sodium azide and 50% glycerol.

Immunogen: The antiserum was produced against synthesized peptide derived from internal of human TAS2R10.

Purification: The antibody was affinity-purified from

rabbit antiserum by affinity-chromatography using epitope-specific immunogen.

Specificity: TAS2R10 antibody detects endogenous levels of total TAS2R10 protein.

Reactivity: Human

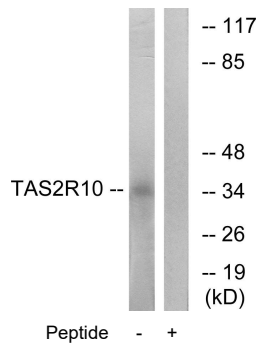
Applications: WB: 1:500~1:3000 IF: 1:100~1:500
ELISA: 1:10000

References:

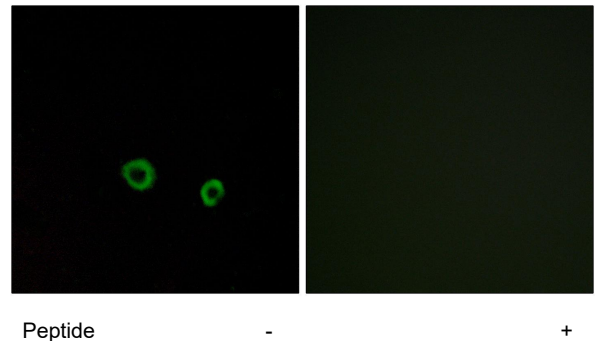
Adler E., Cell 100:693-702(2000).

Fischer A., Mol. Biol. Evol. 22:432-436(2005).

The MGC Project Team; Genome Res. 14:2121-2127(2004).



Western blot analysis of extracts from LOVO cells, using TAS2R10 antibody.



Immunofluorescence analysis of MCF-7 cells, using TAS2R10 antibody.