



Web: www.anbobio.com
www.dijibio.com
Order: order@dijibio.com
Tel: (86) 519 8805 0026

GIPR Antibody [#G805]

Catalog Number: G805

Concentration: 1mg/ml

Swiss-Prot No.: P48546

Other Names: GIP-R; Glucose-dependent insulinotropic polypeptide receptor

Storage/Stability: Store at -20°C/1 year

Form of Antibody: Rabbit IgG in phosphate buffered saline (without Mg²⁺ and Ca²⁺), pH 7.4, 150mM NaCl, 0.02% sodium azide and 50% glycerol.

Immunogen: The antiserum was produced against synthesized peptide derived from internal of human GIPR.

Purification: The antibody was affinity-purified from

rabbit antiserum by affinity-chromatography using epitope-specific immunogen.

Specificity: GIPR antibody detects endogenous levels of total GIPR protein.

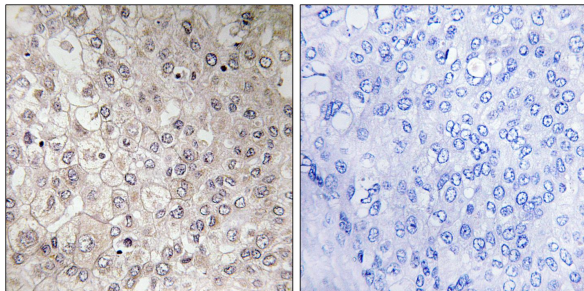
Reactivity: Human (Identities = 100%, Positives = 100%)

Applications: IHC: 1:50~1:100 IF: 1:100~1:500
ELISA: 1:20000

References:

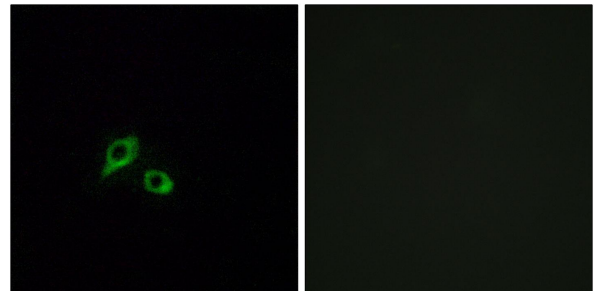
Usdin T.B., Submitted (OCT-1995) to the EMBL/GenBank/DDBJ databases.

Volz A., FEBS Lett. 373:23-29(1995).



Peptide - +

Immunohistochemistry analysis of paraffin-embedded human liver carcinoma tissue using GIPR antibody.



Peptide - +

Immunofluorescence analysis of MCF-7 cells, using GIPR antibody.