



Web: www.anbobio.com
www.dijibio.com
Order: order@dijibio.com
Tel: (86) 519 8805 0026

MRGX3 Antibody [#G816]

Catalog Number: G816

Concentration: 1mg/ml

Swiss-Prot No.: Q96LB0

Other Names: Mas-related G-protein coupled receptor member X3; Sensory neuron-specific G-protein coupled receptor 1/2; MRGPRX3; MRGX3, SNSR1, SNSR2

Storage/Stability: Store at -20°C/1 year

Form of Antibody: Rabbit IgG in phosphate buffered saline (without Mg²⁺ and Ca²⁺), pH 7.4, 150mM NaCl, 0.02% sodium azide and 50% glycerol.

Immunogen: The antiserum was produced against synthesized peptide derived from internal of human MRGX3.

Purification: The antibody was affinity-purified from rabbit antiserum by affinity-chromatography using epitope-specific immunogen.

Specificity: MRGX3 antibody detects endogenous levels of total MRGX3 protein.

Reactivity: Human

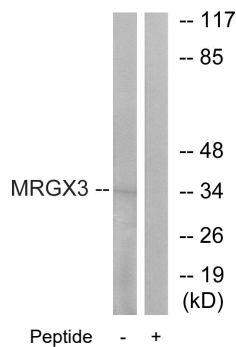
Applications: WB: 1:500~1:3000 IF: 1:100~1:500
ELISA: 1:10000

References:

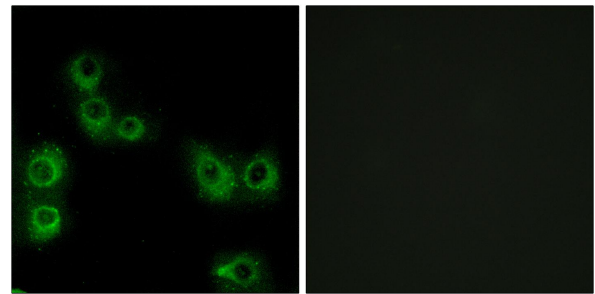
Dong X., Cell 106:619-632(2001).

Lembo P.M.C., Nat. Neurosci. 5:201-209(2002).

The MGC Project Team; Genome Res. 14:2121-2127(2004).



Western blot analysis of extracts from K562 cells, using MRGX3 antibody.



Immunofluorescence analysis of MCF-7 cells, using MRGX3 antibody.