



Web: www.anbobio.com
www.dijibio.com
Order: order@dijibio.com
Tel: (86) 519 8805 0026

OR10S1 Antibody [#G831]

Catalog Number: G831

Concentration: 1mg/ml

Swiss-Prot No.: Q8NGN2

Other Names: Ifactory receptor 10S1; O10S1; olfactory receptor, family 10, subfamily S, member 1; OR11-279

Storage/Stability: Store at -20°C/1 year

Form of Antibody: Rabbit IgG in phosphate buffered saline (without Mg²⁺ and Ca²⁺), pH 7.4, 150mM NaCl, 0.02% sodium azide and 50% glycerol.

Immunogen: The antiserum was produced against synthesized peptide derived from internal of human OR10S1.

Purification: The antibody was affinity-purified from rabbit antiserum by affinity-chromatography using epitope-specific immunogen.

Specificity: OR10S1 antibody detects endogenous levels of total OR10S1 protein.

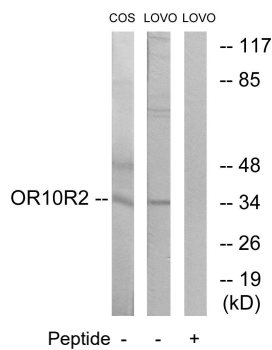
Reactivity: Human

Applications: WB: 1:500~1:3000 IF: 1:100~1:500
ELISA: 1:20000

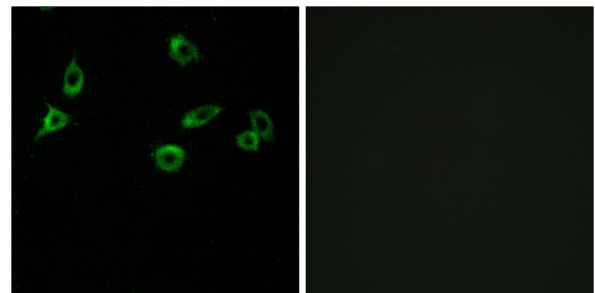
References:

Suwa M., Submitted (JUL-2001) to the EMBL/GenBank/DDBJ databases.

Fuchs T., Genomics 80:295-302(2002).



Western blot analysis of extracts from COS-7 cells and LOVO cells, using OR10S1 antibody.



Immunofluorescence analysis of MCF-7 cells, using OR10S1 antibody.