



**Web:** [www.anbobio.com](http://www.anbobio.com)  
[www.dijibio.com](http://www.dijibio.com)  
**Order:** [order@dijibio.com](mailto:order@dijibio.com)  
**Tel:** (86) 519 8805 0026

## OR56A3 Antibody [#G868]

**Catalog Number:** G868

**Concentration:** 1mg/ml

**Swiss-Prot No.:** Q8NH54

**Other Names:** Olfactory receptor 56A3; OR56A3;  
OR56A3P, OR56A6

**Storage/Stability:** Store at -20°C/1 year

**Form of Antibody:** Rabbit IgG in phosphate buffered saline (without Mg<sup>2+</sup> and Ca<sup>2+</sup>), pH 7.4, 150mM NaCl, 0.02% sodium azide and 50% glycerol.

**Immunogen:** The antiserum was produced against synthesized peptide derived from internal of human OR56A3.

**Purification:** The antibody was affinity-purified from

rabbit antiserum by affinity-chromatography using epitope-specific immunogen.

**Specificity:** OR56A3 antibody detects endogenous levels of total OR56A3 protein.

**Reactivity:** Human (Identities = 100%, Positives = 100%)

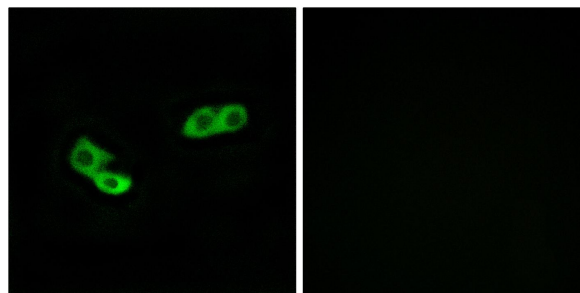
**Applications:** IF: 1:100~1:500 ELISA: 1:20000

**References:**

Suwa M., Submitted (JUL-2001) to the EMBL/GenBank/DDBJ databases.

Taylor T.D., Nature 440:497-500(2006).

Malnic B., Proc. Natl. Acad. Sci. U.S.A. 101:2584-2589(2004).



Peptide

-

+

Immunofluorescence analysis of LOVO cells, using OR56A3 antibody.