



**Web:** [www.anbobio.com](http://www.anbobio.com)  
[www.dijibio.com](http://www.dijibio.com)  
**Order:** [order@dijibio.com](mailto:order@dijibio.com)  
**Tel:** (86) 519 8805 0026

## US28 Antibody [#G957]

**Catalog Number:** G957

**Concentration:** 1mg/ml

**Swiss-Prot No.:** P69333

**Other Names:** G-protein coupled receptor homolog US28, HHRF3

**Storage/Stability:** Store at -20°C/1 year

**Form of Antibody:** Rabbit IgG in phosphate buffered saline (without Mg<sup>2+</sup> and Ca<sup>2+</sup>), pH 7.4, 150mM NaCl, 0.02% sodium azide and 50% glycerol.

**Immunogen:** The antiserum was produced against synthesized peptide derived from internal of human US28.

**Purification:** The antibody was affinity-purified from rabbit antiserum by affinity-chromatography using epitope-specific immunogen.

**Specificity:** US28 antibody detects endogenous levels of total US28 protein.

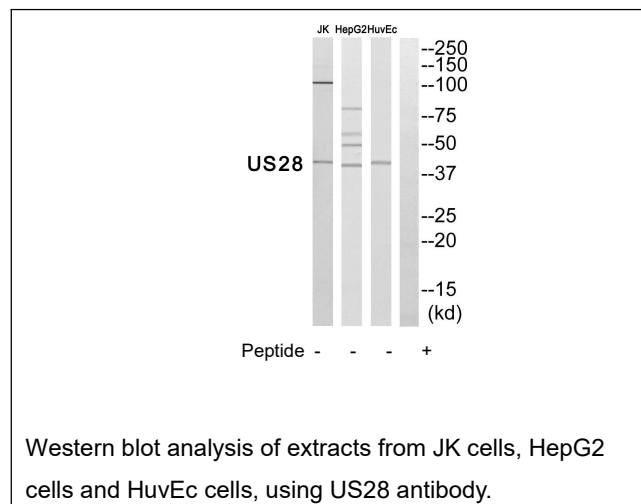
**Reactivity:** Human

**Applications:** WB: 1:500~1:1000 ELISA: 1:10000

**References:**

Neote K., Cell 72:415-425(1993) [PubMed: 7679328].

Rasmussen L., J. Infect. Dis. 187:809-819(2003) [PubMed: 12599055].



**For Research Use Only**