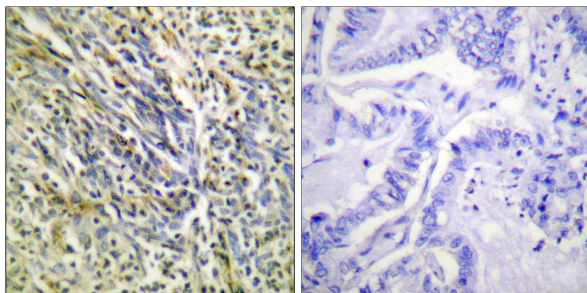




Web: www.anbobio.com
www.dijibio.com
Order: order@dijibio.com
Tel: (86) 519 8805 0026

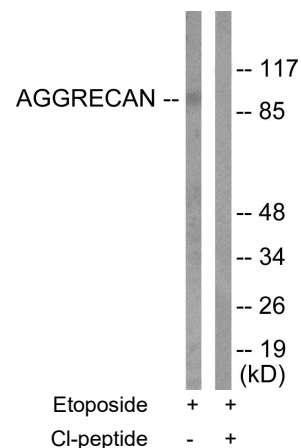
Aggrecan (Cleaved-Asp369) Antibody [#L0101]

- Catalog Number:** L0101-1, L0101-2, L0101
Amount: 50µg/50µl, 100µg/100µl, 200µg/200µl
Swiss-Prot No. : P16112
All Names: CSPG1, CSPGCP, MSK16, CHONDROITIN SULFATE PROTEOGLYCAN CORE PROTEIN 1, aggrecan 1 (chondroitin sulfate proteoglycan 1, large aggregating proteoglycan, antigen identified by monoclonal antibody A0122), aggrecan 1 isoform 1 precursor, aggrecan 1 isoform 2 precursor, cartilage-specific proteoglycan core protein
All Sites: Human: Asp369; Rat: Asp369
Form of Antibody: Rabbit IgG in phosphate buffered saline (without Mg²⁺ and Ca²⁺), pH 7.4, 150mM NaCl, 0.02% sodium azide and 50% glycerol.
Storage/Stability: Store at -20°C/1 year
Immunogen: The antiserum was produced against synthesized peptide derived from human Aggrecan.
Purification: The antibody was affinity-purified from rabbit antiserum by affinity-chromatography using epitope-specific immunogen.
Specificity/Sensitivity: Aggrecan (Cleaved-Asp369) antibody detects endogenous levels of fragment of activated Aggrecan resulting from cleavage adjacent to Asp369.
Reactivity: Human, Rat
Applications: WB: 1:500~1:3000 IHC: 1:50~1:100
ELISA: 1:20000
References: Ichiro Sekiya, J. Biol. Chem., Apr 2000; 275: 10738.
Ying Liu, J. Biol. Chem., Nov 1997; 272: 29880.
Russell T. Matthews, J. Neurosci., Sep 2002; 22: 7536.
Amit Agrawal, Am J Physiol Cell Physiol, Apr 2007; 10.1152



CI-Peptide - +

Immunohistochemical analysis of paraffin-embedded human lung carcinoma tissue using Aggrecan (Cleaved-Asp369) antibody (#L0101).



Western blot analysis of extracts from Jurkat cells, treated with Etoposide (25µM, 60mins), using Aggrecan (Cleaved-Asp369) antibody (#L0101).