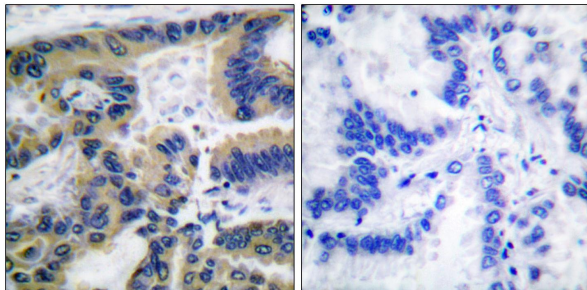




Web: www.anbobio.com
www.dijibio.com
Order: order@dijibio.com
Tel: (86) 519 8805 0026

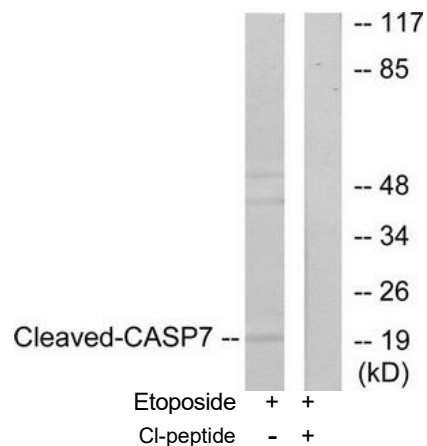
Caspase 7 (Cleaved-Asp198) Antibody [#L0109]

- Catalog Number:** L0109
Amount: 50µg/50µl, 100µg/100µl, 200µg/200µl
Swiss-Prot No. : P55210
All Names: Caspase-7 [Precursor], EC 3.4.22. CASP-7, ICE-like apoptotic protease 3, ICE-LAP3, Apoptotic protease Mch-3, CMH-1, CASP7, MCH3
All Sites: Human: Asp198; Mouse: Asp198
Form of Antibody: Rabbit IgG in phosphate buffered saline (without Mg²⁺ and Ca²⁺), pH 7.4, 150mM NaCl, 0.02% sodium azide and 50% glycerol.
Storage/Stability: Store at -20°C/1 year
Immunogen: The antiserum was produced against synthesized peptide derived from human Caspase 7.
Purification: The antibody was affinity-purified from rabbit antiserum by affinity-chromatography using epitope-specific immunogen.
Specificity/Sensitivity: Caspase 7 (cleaved-Asp198) antibody reacts with C-half of cleavage form at Asp198.
Reactivity: Human, Mouse
Applications: WB: 1:500~1:3000 IHC: 1:50~1:100
ELISA: 1:40000
References: Tara Sotsky Kent, Ann. Surg. Oncol., Feb 2004; 11: 192.
Lucy J. Schmidt, J Androl, Nov 2004; 25: 944 - 953.
Allison M. Hunter, J. Biol. Chem., Feb 2003; 278: 7494 - 7499.
Dean A. Fennell, Clin. Cancer Res., Mar 2005; 11: 2097 - 2105.



Cl-peptide - +

Immunohistochemical analysis of paraffin-embedded human lung carcinoma tissue, using Caspase 7 (cleaved-Asp198) antibody.



Western blot analysis of extracts from 293 cells, treated with Etoposide (25uM, 60mins), using Caspase 7 (cleaved-Asp198) antibody.

For Research Use Only