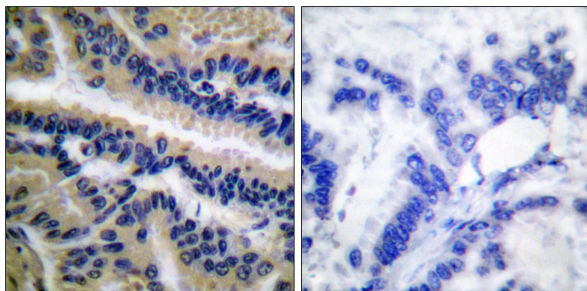




Web: [www.anbobio.com](http://www.anbobio.com)  
[www.dijibio.com](http://www.dijibio.com)  
Order: [order@dijibio.com](mailto:order@dijibio.com)  
Tel: (86) 519 8805 0026

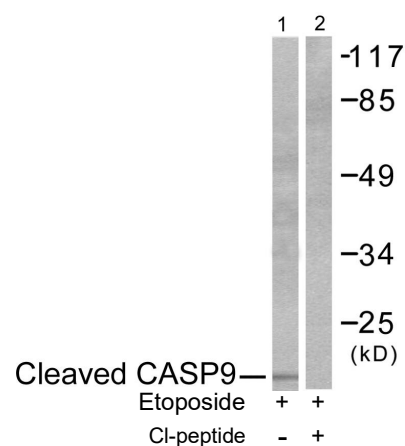
## Caspase 9 (Cleaved-Asp353) Antibody [#L0110]

- Catalog Number:** L0110  
**Amount:** 50µg/50µl, 100µg/100µl, 200µg/200µl  
**Swiss-Prot No. :** P55211  
**All Names:** APAF-3, Apoptotic protease Mch-6, Apoptotic protease activating factor 3, CASP-9, Caspase-9, Caspase-9 precursor, EC 3.4.22.-, ICE-LAP6, ICE-like apoptotic protease 6, MCH6, RNCASP9  
**All Sites:** Mouse: Asp353; Rat: Asp353  
**Form of Antibody:** Rabbit IgG in phosphate buffered saline (without Mg<sup>2+</sup> and Ca<sup>2+</sup>), pH 7.4, 150mM NaCl, 0.02% sodium azide and 50% glycerol.  
**Storage/Stability:** Store at -20°C/1 year  
**Immunogen:** The antiserum was produced against synthesized peptide derived from mouse Caspase 9.  
**Purification:** The antibody was affinity-purified from rabbit antiserum by affinity-chromatography using epitope-specific immunogen.  
**Specificity/Sensitivity:** Caspase 9 (cleaved-Asp353) antibody detects endogenous levels of fragment of activated Caspase 9 resulting from cleavage adjacent to Asp 353.  
**Reactivity:** Human, Mouse, Rat  
**Applications:** WB: 1:500~1:3000 IHC: 1:50~1:100  
ELISA: 1:20000  
**References:** Tara Sotsky Kent, Ann. Surg. Oncol., Feb 2004; 11: 192.  
Yuanming Hu, J. Biol. Chem., Dec 1998; 273: 33489.  
C.S. Thota, Biol Reprod, Dec 2005; 73: 1191 - 1198.  
Jonathan H. Lieman, J. Biol. Chem., Mar 2005; 280: 10484 - 10490.



Cl-peptide - +

Immunohistochemical analysis of paraffin-embedded human lung carcinoma tissue, using Caspase 9 (cleaved-Asp353) antibody.



Western blot analysis of extracts from NIH/3T3 cells, treated with Etoposide (25µM, 60mins), using Caspase 9 (cleaved-Asp353) antibody.

**For Research Use Only**