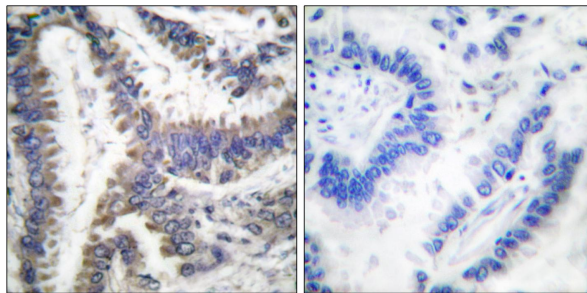




Web: www.anbobio.com
www.dijibio.com
Order: order@dijibio.com
Tel: (86) 519 8805 0026

DFF45 (Cleaved-Asp224) Antibody [#L0113]

- Catalog Number:** L0113-1, L0113-2, L0113
Amount: 50µg/50µl, 100µg/100µl, 200µg/200µl
Swiss-Prot No. : O00273
All Names: DFF-45, DFF1, DFF45, DNAaction factor 45 kDa subunit, H13, ICAD, inhibitor of CAD
All Sites: Human: Asp224
Form of Antibody: Rabbit IgG in phosphate buffered saline (without Mg²⁺ and Ca²⁺), pH 7.4, 150mM NaCl, 0.02% sodium azide and 50% glycerol.
Storage/Stability: Store at -20°C/1 year
Immunogen: The antiserum was produced against synthesized peptide derived from human DFF45.
Purification: The antibody was affinity-purified from rabbit antiserum by affinity-chromatography using epitope-specific immunogen.
Specificity/Sensitivity: DFF45 (Cleaved-Asp224) antibody detects endogenous levels of fragment of activated DFF45 resulting from cleavage adjacent to Asp224.
Reactivity: Human
Applications: IHC: 1:50~100 ELISA: 1:5000
References: Laetitia Charrier, Cancer Res., Apr 2002; 62: 2169 - 2174.
Jijie Gu, J. Biol. Chem., Jul 1999; 274: 20759.
QING Y. LIU, Ann. N.Y. Acad. Sci., Jan 1999; 887: 60.
Naohiro Inohara, J. Biol. Chem., Jan 1999; 274: 270.



Cl-peptide - +

Immunohistochemical analysis of paraffin-embedded human lung carcinoma tissue, using DFF45 (Cleaved-Asp224) antibody.