



Web: [www.anbobio.com](http://www.anbobio.com)

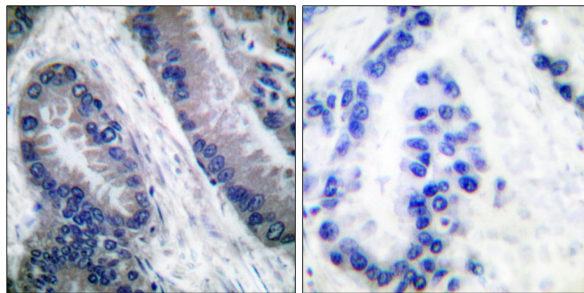
[www.dijibio.com](http://www.dijibio.com)

Order: [order@dijibio.com](mailto:order@dijibio.com)

Tel: (86) 519 8805 0026

## Caspase 1 (Cleaved-Asp210) Antibody [#L0115]

- Catalog Number:** L0115-1, L0115-2, L0115  
**Amount:** 50µg/50µl, 100µg/100µl, 200µg/200µl  
**Swiss-Prot No. :** P29466  
**All Names:** CASP-1, ICE, IL-1 beta converting enzyme, IL-1BC, IL1BCE, caspase-1, interleukin-1 beta convertase, interleukin-1 beta converting enzyme, p45  
**All Sites:** Human: Asp210  
**Form of Antibody:** Rabbit IgG in phosphate buffered saline (without Mg<sup>2+</sup> and Ca<sup>2+</sup>), pH 7.4, 150mM NaCl, 0.02% sodium azide and 50% glycerol.  
**Storage/Stability:** Store at -20°C/1 year  
**Immunogen:** The antiserum was produced against synthesized peptide derived from human Caspase 1.  
**Purification:** The antibody was affinity-purified from rabbit antiserum by affinity-chromatography using epitope-specific immunogen.  
**Specificity/Sensitivity:** Caspase 1 (Cleaved-Asp210) antibody detects endogenous levels of fragment of activated Caspase 1 resulting from cleavage adjacent to Asp210.  
**Reactivity:** Human  
**Applications:** IHC: 1:50~1:100 ELISA: 1:20000  
**References:** Victor Elharrar, FASEB J, Mar 2006; 20: A228.  
R Matsumura, Ann Rheum Dis, May 2001; 60: 473 - 482.  
Adriana López Ponte Stem Cells, Mar 2007; 10.1634/stemcells.2007-0054.  
A I Catrina, Ann Rheum Dis, Oct 2002; 61: 934 - 936.



CI-peptide                      -                      +

Immunohistochemical analysis of paraffin-embedded human lung carcinoma tissue, using Caspase 1 (Cleaved-Asp210) antibody.