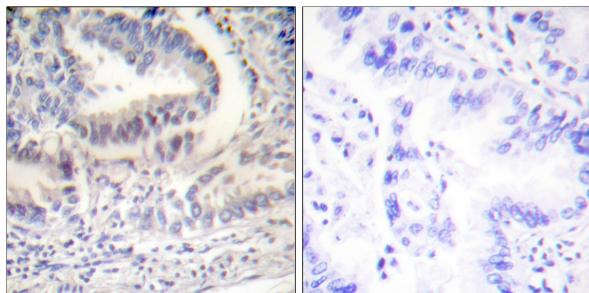




Web: www.anbobio.com
www.dijibio.com
Order: order@dijibio.com
Tel: (86) 519 8805 0026

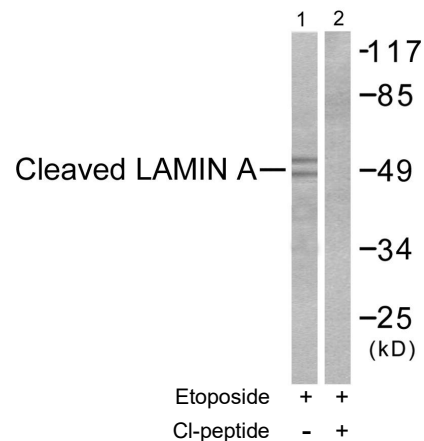
Lamin A (Cleaved-Asp230) Antibody [#L0117]

- Catalog Number:** L0117-1, L0117-2, L0117
Amount: 50µg/50µl, 100µg/100µl, 200µg/200µl
Swiss-Prot No. : P02545
All Names: 70 kDa lamin, LAMA, LMN1, LMNA
All Sites: Human: Asp230; Mouse: Asp230; Rat: Asp229
Form of Antibody: Rabbit IgG in phosphate buffered saline (without Mg²⁺ and Ca²⁺), pH 7.4, 150mM NaCl, 0.02% sodium azide and 50% glycerol.
Storage/Stability: Store at -20°C/1 year
Immunogen: The antiserum was produced against synthesized peptide derived from human Lamin A.
Purification: The antibody was affinity-purified from rabbit antiserum by affinity-chromatography using epitope-specific immunogen.
Specificity/Sensitivity: Lamin A (Cleaved-Asp230) antibody detects endogenous levels of fragment of activated Lamin A resulting from cleavage adjacent to Asp230.
Reactivity: Human, Mouse, Rat
Applications: WB: 1:500~1:3000 IHC: 1:50~1:100
ELISA: 1:40000
References: Revekka L. Boguslavsky, Hum. Mol. Genet., Feb 2006; 15: 653 - 663.
Dan Constantinescu, Stem Cells, Jan 2006; 24: 177 - 185.
Richard L. Frock, Genes & Dev., Feb 2006; 20: 486 - 500.
Jan Lammerding, J. Biol. Chem., Sep 2006; 281: 25768 - 25780.



Cl-peptide - +

Immunohistochemical analysis of paraffin-embedded human lung carcinoma tissue using Lamin A (Cleaved-Asp230) Antibody (#L0117).



Western blot analysis of extracts from NIH/3T3 cells, treated with Etoposide (25µM, 60mins), using Lamin A (Cleaved-Asp230) Antibody (#L0117).