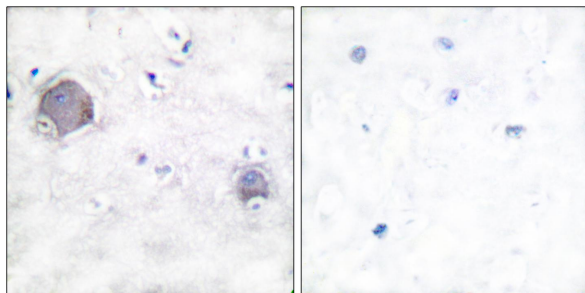




Web: www.anbobio.com
www.dijibio.com
Order: order@dijibio.com
Tel: (86) 519 8805 0026

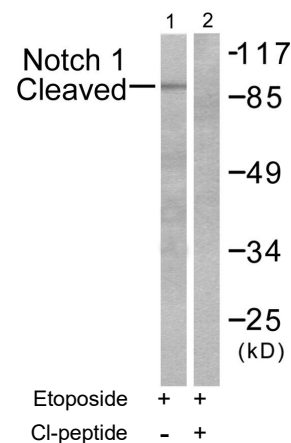
Notch 1 (Cleaved-Val1744) Antibody [#L0119]

- Catalog Number:** L0119
Amount: 50µg/50µl, 100µg/100µl, 200µg/200µl
Swiss-Prot No. : P46531
All Names: NOTC1, NOTCH1, TAN1, hN1, neurogenic locus notch homolog protein 1, neurogenic locus notch homolog protein 1 precursor, notch (Drosophila) homolog 1 (translocation-associated), notch homolog 1, translocation-associated (Drosophila), translocation-associated notch protein TAN-1
All Sites: Human: Val1744; Mouse: Val1744; Rat: Val2562
Form of Antibody: Rabbit IgG in phosphate buffered saline (without Mg²⁺ and Ca²⁺), pH 7.4, 150mM NaCl, 0.02% sodium azide and 50% glycerol.
Storage/Stability: Store at -20°C/1 year
Immunogen: The antiserum was produced against synthesized peptide derived from human Notch 1.
Purification: The antibody was affinity-purified from rabbit antiserum by affinity-chromatography using epitope-specific immunogen.
Specificity/Sensitivity: Notch 1 (cleaved-Val1744) antibody detects endogenous levels of fragment of activated Notch 1 resulting from cleavage adjacent to Val1744.
Reactivity: Human, Mouse, Rat
Applications: WB: 1:500~1:3000 IHC: 1:50~1:100
ELISA: 1:5000
References: Kohshi Ohishi, Blood, May 2000; 95: 2847 - 2854.
Eva Monsalve, J. Immunol., May 2006; 176: 5362 - 5373.
R. Agarwal, Invest. Ophthalmol. Vis. Sci., May 2003; 44: 3340.
Lin Shan, Am J Physiol Lung Cell Mol Physiol, Feb 2007; 292: L500 - L509.



Cl-peptide - +

Immunohistochemical analysis of paraffin-embedded human brain tissue, using Notch 1 (cleaved-Val1744) antibody.



Western blot analysis of extracts from NIH/3T3 cells, treated with etoposide (25µM, 1 hour), using Notch 1 (cleaved-Val1744) antibody.

For Research Use Only