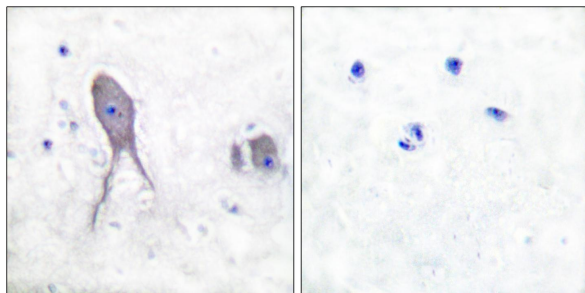




Web: www.anbobio.com
www.dijibio.com
Order: order@dijibio.com
Tel: (86) 519 8805 0026

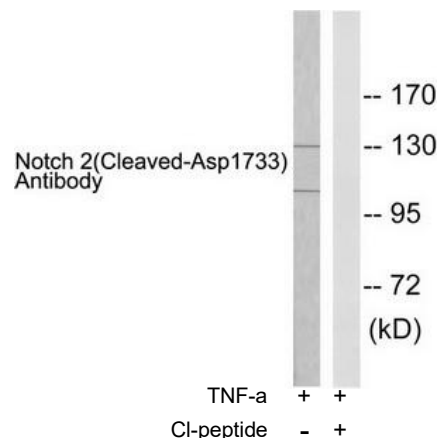
Notch 2 (Cleaved-Asp1733) Antibody [#L0120]

- Catalog Number:** L0120
Amount: 50µg/50µl, 100µg/100µl, 200µg/200µl
Swiss-Prot No. : Q04721
All Names: Motch B, NOTC2, NOTCH2, NTC2, Neurogenic locus notch homolog protein 2 precursor, hN2
All Sites: Human: Asp1733; Mouse: Asp1732; Rat: Asp1733
Form of Antibody: Rabbit IgG in phosphate buffered saline (without Mg²⁺ and Ca²⁺), pH 7.4, 150mM NaCl, 0.02% sodium azide and 50% glycerol.
Storage/Stability: Store at -20°C/1 year
Immunogen: The antiserum was produced against synthesized peptide derived from human Notch 2.
Purification: The antibody was affinity-purified from rabbit antiserum by affinity-chromatography using epitope-specific immunogen.
Specificity/Sensitivity: Notch 2 (cleaved-Asp1733) antibody detects endogenous levels of fragment of activated Notch 2 resulting from cleavage adjacent to Asp1733.
Reactivity: Human, Mouse, Rat
Applications: WB: 1:500~1:3000 IHC: 1:50~1:100
ELISA: 1:40000
References: R. Agarwal, Invest. Ophthalmol. Vis. Sci., May 2003; 44: 3340.
Kohshi Ohishi, Blood, May 2000; 95: 2847 - 2854.
T. Hayashi, J Androl, Nov 2001; 22: 999.
TA Mitsiadis, J. Cell Biol., Jul 1995; 130: 407.



Cl-peptide - +

Immunohistochemical analysis of paraffin-embedded human brain tissue, using Notch 2 (cleaved-Asp1733) antibody.



Western blot analysis of extracts from 293 cells treated with TNF-a (20ng/ml, 30mins), using Notch 2 (cleaved-Asp1733) antibody.

For Research Use Only