



**Web:** [www.anbobio.com](http://www.anbobio.com)  
[www.dijibio.com](http://www.dijibio.com)  
**Order:** [order@dijibio.com](mailto:order@dijibio.com)  
**Tel:** (86) 519 8805 0026

## Caspase 1 (p10, Cleaved-Ala317) Antibody [#L0141]

**Catalog Number:** L0141

**Concentration:** 1mg/ml

**Swiss-Prot No.:** P29466

**Other Names:** CASP-1; CASP1; CASP1 nirs variant 1; caspase 1, apoptosis-related cysteine peptidase (interleukin 1, beta, convertase); caspase 1, apoptosis-related cysteine protease (interleukin 1, beta, convertase); Caspase-1; Caspase-1 subunit p10; Caspase-1 subunit p20; ICE; IL-1 beta-converting enzyme; IL-1BC; IL1B-convertase; IL1BC; IL1BCE; interleukin 1-B converting enzyme; interleukin 1-beta convertase; Interleukin-1 beta convertase; Interleukin-1 beta-converting enzyme; p45

**Storage/Stability:** Store at -20°C/1 year

**Form of Antibody:** Rabbit IgG in phosphate buffered saline (without Mg<sup>2+</sup> and Ca<sup>2+</sup>), pH 7.4, 150mM NaCl,

0.02% sodium azide and 50% glycerol.

**Immunogen:** The antiserum was produced against synthesized peptide derived from human CASP1.

**Purification:** The antibody was affinity-purified from rabbit antiserum by affinity-chromatography using epitope-specific immunogen.

**Specificity:** Caspase 1 (p10, Cleaved-Ala317) antibody detects endogenous levels of fragment of activated CASP1 resulting from cleavage adjacent to Ala317.

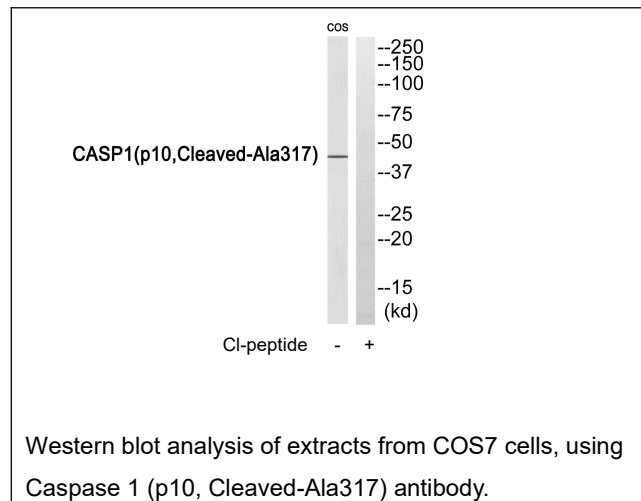
**Reactivity:** Human

**Applications:** WB: 1:500~1:3000 ELISA: 1:1000

**References:**

Thornberry N.A., Nature 356:768-774(1992).

Taylor T.D., Nature 440:497-500(2006).



**For Research Use Only**