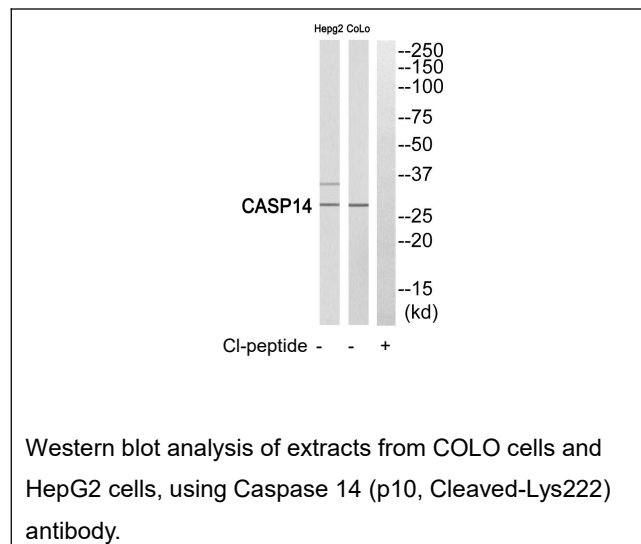




Web: www.anbobio.com
www.dijibio.com
Order: order@dijibio.com
Tel: (86) 519 8805 0026

Caspase 14 (p10, Cleaved-Lys222) Antibody [#L0148]

- Catalog Number:** L0148
Amount: 50µg/50µl, 100µg/100µl, 200µg/200µl
Swiss-Prot No. : P31944
All Names: Caspase-14, CASP-14, EC=3.4.22.-
All Sites: Human: Lys153
Form of Antibody: Rabbit IgG in phosphate buffered saline (without Mg²⁺ and Ca²⁺), pH 7.4, 150mM NaCl, 0.02% sodium azide and 50% glycerol.
Storage/Stability: Store at -20°C/1 year
Immunogen: The antiserum was produced against synthesized peptide derived from human Caspase 14.
Purification: The antibody was affinity-purified from rabbit antiserum by affinity-chromatography using epitope-specific immunogen.
Specificity/Sensitivity: Caspase 14 (p10, Cleaved-Lys222) antibody detects endogenous levels of fragment of activated Caspase 14 resulting from cleavage adjacent to Lys222.
Reactivity: Human
Applications: WB: 1:500~1:3000 ELISA: 1:40000
References: Eckhart L., Biochem. Biophys. Res. Commun. 277:655-659(2000) [PubMed: 11062009].
Pistritto G., Cell Death Differ. 9:995-1006(2002) [PubMed: 12181750].
Rasmussen H.H., Electrophoresis 13:960-969(1992) [PubMed: 1286667].



For Research Use Only