



Web: [www.anbobio.com](http://www.anbobio.com)  
[www.dijibio.com](http://www.dijibio.com)  
Order: [order@dijibio.com](mailto:order@dijibio.com)  
Tel: (86) 519 8805 0026

## ZNF287 Antibody [#C11719]

**Catalog Number:** C11719

**Concentration:** 1mg/ml

**Swiss-Prot No.:** Q9HBT7

**Other Names:** Zinc finger protein with KRAB and SCAN domains 13, Zinc finger protein 287, ZNF287, ZKSCAN13

**Storage/Stability:** Store at -20°C/1 year

**Form of Antibody:** Rabbit IgG in phosphate buffered saline (without Mg<sup>2+</sup> and Ca<sup>2+</sup>), pH 7.4, 150mM NaCl, 0.02% sodium azide and 50% glycerol.

**Immunogen:** The antiserum was produced against synthesized peptide derived from internal of human ZNF287.

**Purification:** The antibody was affinity-purified from rabbit antiserum by affinity-chromatography using

epitope-specific immunogen.

**Specificity:** ZNF287 antibody detects endogenous levels of total ZNF287 protein.

**Reactivity:** Human

**Applications:** WB: 1:500~1:3000 IHC: 1:50~1:100

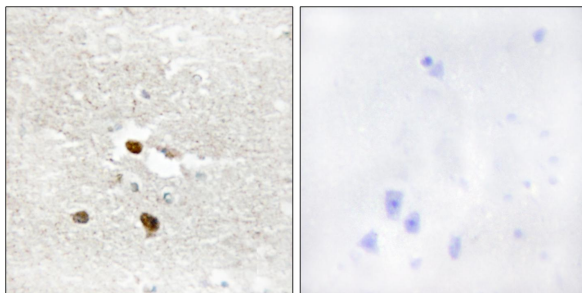
ELISA: 1:5000

**References:**

Romero-Pastrana F., Submitted (DEC-1999) to the EMBL/GenBank/DDBJ databases.

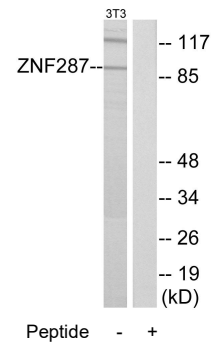
Ebert L., Submitted (JUN-2004) to the EMBL/GenBank/DDBJ databases.

The MGC Project Team, Genome Res. 14:2121-2127(2004).



Peptide - +

Immunohistochemistry analysis of paraffin-embedded human brain tissue using ZNF287 antibody.



Peptide - +

Western blot analysis of extracts from NIH-3T3 cells, using ZNF287 antibody.