



Web: [www.anbobio.com](http://www.anbobio.com)  
[www.dijibio.com](http://www.dijibio.com)  
Order: [order@dijibio.com](mailto:order@dijibio.com)  
Tel: (86) 519 8805 0026

## BCA3 Antibody [#C11741]

**Catalog Number:** C11741

**Concentration:** 1mg/ml

**Swiss-Prot No.:** Q9NQ31

**Other Names:** Breast cancer-associated gene 3 protein;  
PKA-interacting protein; AKIP1

**Storage/Stability:** Store at -20°C/1 year

**Form of Antibody:** Rabbit IgG in phosphate buffered saline (without Mg<sup>2+</sup> and Ca<sup>2+</sup>), pH 7.4, 150mM NaCl, 0.02% sodium azide and 50% glycerol.

**Immunogen:** The antiserum was produced against synthesized peptide derived from internal of human BCA3.

**Purification:** The antibody was affinity-purified from rabbit antiserum by affinity-chromatography using epitope-specific immunogen.

**Specificity:** BCA3 antibody detects endogenous levels of total BCA3 protein.

**Reactivity:** Human

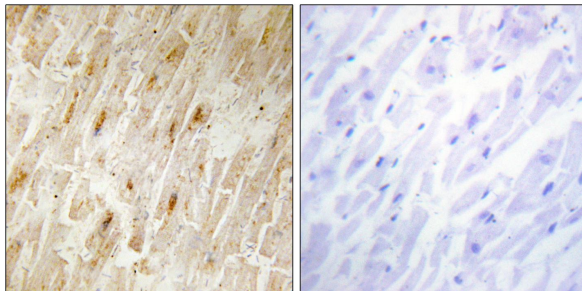
**Applications:** WB: 1:500~1:3000 IHC: 1:50~1:100  
ELISA: 1:20000

**References:**

Kitching R., *Biochim. Biophys. Acta* 1625:116-121(2003).

Amid C., *Cytogenet. Cell Genet.* 93:284-290(2001).

Ota T., *Nat. Genet.* 36:40-45(2004).

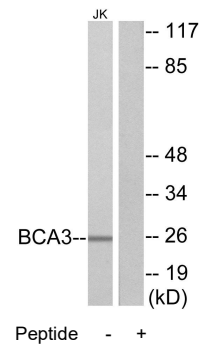


Peptide

-

+

Immunohistochemistry analysis of paraffin-embedded human heart tissue using BCA3 antibody.



Peptide

-

+

Western blot analysis of extracts from Jurkat cells, using BCA3 antibody.