



Web: www.anbobio.com
www.dijibio.com
Order: order@dijibio.com
Tel: (86) 519 8805 0026

Collagen XI α 2 Antibody [#C12215]

Catalog Number: C12215

Concentration: 1mg/ml

Swiss-Prot No.: P13942

Other Names: Collagen alpha-2(XI) chain, COBA2

Storage/Stability: Store at -20°C /1 year

Form of Antibody: Rabbit IgG in phosphate buffered saline (without Mg^{2+} and Ca^{2+}), pH 7.4, 150mM NaCl, 0.02% sodium azide and 50% glycerol.

Immunogen: The antiserum was produced against synthesized peptide derived from internal of human Collagen XI α 2.

Purification: The antibody was affinity-purified from

rabbit antiserum by affinity-chromatography using epitope-specific immunogen.

Specificity: Collagen XI α 2 antibody detects endogenous levels of total Collagen XI α 2 protein.

Reactivity: Human (Identities = 100%, Positives = 100%);
Mouse (Identities = 83%, Positives = 100%)

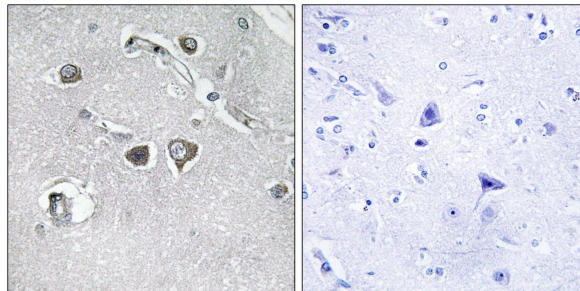
Applications: IHC: 1:50~1:100 ELISA: 1:1000

References:

Vuoristo M.M., J. Biol. Chem. 270:22873-22881(1995).

Mungall A.J., Nature 425:805-811(2003).

Lui V.C., Genomics 32:401-412(1996).



Peptide

-

+

Immunohistochemistry analysis of paraffin-embedded human brain tissue, using Collagen XI α 2 antibody.