



Web: www.anbobio.com
www.dijibio.com
Order: order@dijibio.com
Tel: (86) 519 8805 0026

CYTL1 Antibody [#C12324]

Catalog Number: C12324

Concentration: 1mg/ml

Swiss-Prot No.: Q9NRR1

Other Names: Cytokine-like protein 1 [Precursor], Protein C17, C4orf4, UNQ1942/PRO4425

Storage/Stability: Store at -20°C/1 year

Form of Antibody: Rabbit IgG in phosphate buffered saline (without Mg²⁺ and Ca²⁺), pH 7.4, 150mM NaCl, 0.02% sodium azide and 50% glycerol.

Immunogen: The antiserum was produced against synthesized peptide derived from internal of human CYTL1.

Purification: The antibody was affinity-purified from rabbit antiserum by affinity-chromatography using epitope-specific immunogen.

Specificity: CYTL1 antibody detects endogenous levels of total CYTL1 protein.

Reactivity: Human (Identities = 100%, Positives = 100%)

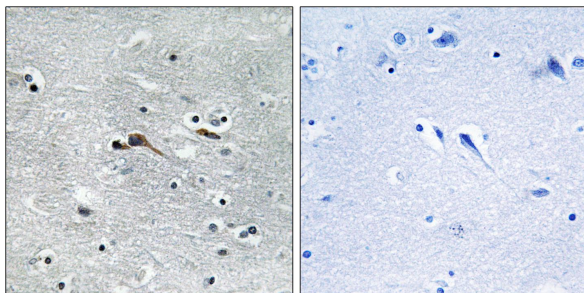
Applications: WB: 1:500~1:3000 IHC: 1:50~1:100
ELISA: 1:40000

References:

Liu X., Genomics 65:283-292(2000).

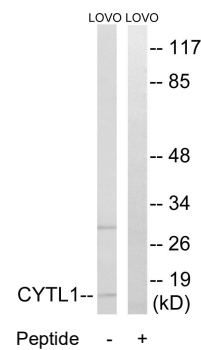
Clark H.F., Genome Res. 13:2265-2270(2003).

Zhang Z., Protein Sci. 13:2819-2824(2004).



Peptide - +

Immunohistochemistry analysis of paraffin-embedded human brain tissue using CYTL1 antibody.



Peptide - +

Western blot analysis of extracts from LOVO cells, using CYTL1 antibody.