



Web: www.anbobio.com
www.dijibio.com
Order: order@dijibio.com
Tel: (86) 519 8805 0026

Collagen I $\alpha 2$ Antibody [#C12195]

Catalog Number: C12195

Concentration: 1mg/ml

Swiss-Prot No.: P08123

Other Names: Collagen alpha-2(I) chain [Precursor],
Alpha-2 type I collagen, CO1A2

Storage/Stability: Store at -20°C /1 year

Form of Antibody: Rabbit IgG in phosphate buffered saline (without Mg^{2+} and Ca^{2+}), pH 7.4, 150mM NaCl, 0.02% sodium azide and 50% glycerol.

Immunogen: The antiserum was produced against synthesized peptide derived from internal of human Collagen I $\alpha 2$.

Purification: The antibody was affinity-purified from rabbit antiserum by affinity-chromatography using epitope-specific immunogen.

Specificity: Collagen I $\alpha 2$ antibody detects endogenous levels of total Collagen I $\alpha 2$ protein.

Reactivity: Human

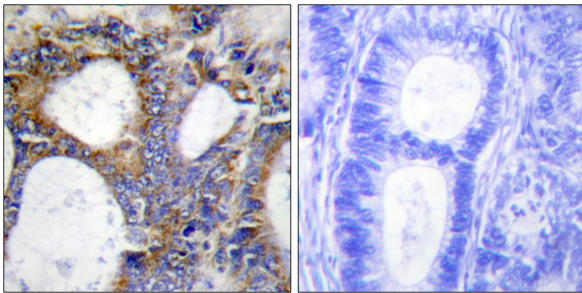
Applications: WB: 1:500~1:3000 IHC: 1:50~1:100
IF: 1:100~1:500 ELISA: 1:20000

References:

Dagleish R., Nucleic Acids Res. 25:181-187(1997).

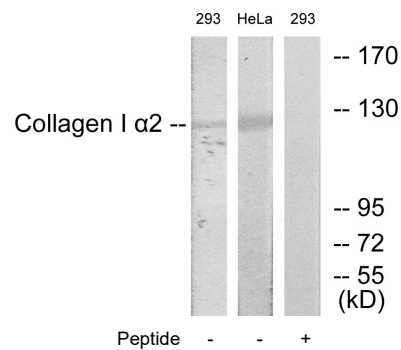
Korkko J.M., Am. J. Hum. Genet. 62:98-110(1998).

Akai J., Connect. Tissue Res. 30:1-6(1998).

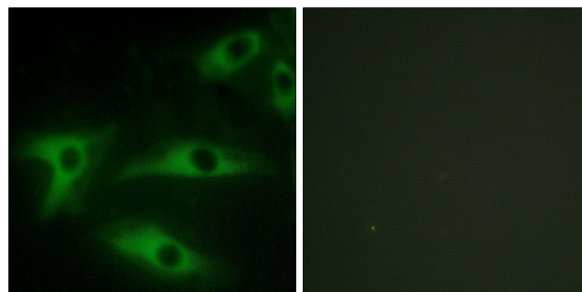


Peptide - +

Immunohistochemistry analysis of paraffin-embedded human colon carcinoma tissue using Collagen I $\alpha 2$ antibody.



Western blot analysis of extracts from 293 cells and HeLa cells, using Collagen I $\alpha 2$ antibody.



Peptide - +

Immunofluorescence analysis of HeLa cells, using Collagen I $\alpha 2$ antibody.