



**Web:** [www.anbobio.com](http://www.anbobio.com)  
[www.dijibio.com](http://www.dijibio.com)  
**Order:** [order@dijibio.com](mailto:order@dijibio.com)  
**Tel:** (86) 519 8805 0026

## Collagen V $\alpha$ 1 Antibody [#C12201]

**Catalog Number:** C12201

**Concentration:** 1mg/ml

**Swiss-Prot No.:** P20908

**Other Names:** Collagen alpha-1(V) chain [Precursor], COL5A1

**Storage/Stability:** Store at  $-20^{\circ}\text{C}$ /1 year

**Form of Antibody:** Rabbit IgG in phosphate buffered saline (without  $\text{Mg}^{2+}$  and  $\text{Ca}^{2+}$ ), pH 7.4, 150mM NaCl, 0.02% sodium azide and 50% glycerol.

**Immunogen:** The antiserum was produced against synthesized peptide derived from internal of human Collagen V  $\alpha$ 1.

**Purification:** The antibody was affinity-purified from rabbit antiserum by affinity-chromatography using epitope-specific immunogen.

**Specificity:** Collagen V  $\alpha$ 1 antibody detects endogenous levels of total Collagen V  $\alpha$ 1 protein.

**Reactivity:** Human

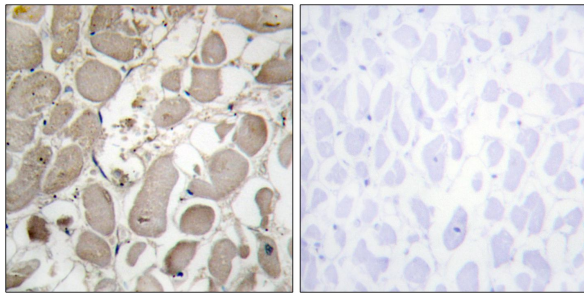
**Applications:** WB: 1:500~1:3000 IHC: 1:50~1:100  
IF: 1:100~1:500 ELISA: 1:20000

**References:**

Takahara K., J. Biol. Chem. 266:13124-13129(1991).

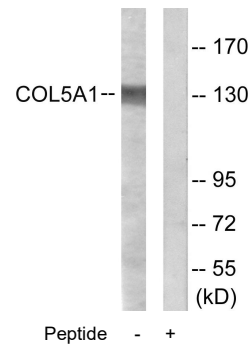
Greenspan D.S., J. Biol. Chem. 266:24727-24733(1991).

Humphray S.J., Nature 429:369-374(2004).



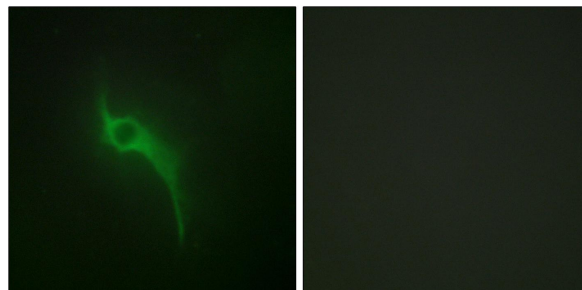
Peptide - +

Immunohistochemistry analysis of paraffin-embedded human heart tissue using Collagen V  $\alpha$ 1 antibody.



Peptide - +

Western blot analysis of extracts from HeLa cells, using Collagen V  $\alpha$ 1 antibody.



Peptide - +

Immunofluorescence analysis of HeLa cells, using Collagen V  $\alpha$ 1 antibody.