



Web: [www.anbobio.com](http://www.anbobio.com)

[www.dijibio.com](http://www.dijibio.com)

Order: [order@dijibio.com](mailto:order@dijibio.com)

Tel: (86) 519 8805 0026

## Collagen VI $\alpha$ 2 Antibody [#C12205]

**Catalog Number:** C12205

**Concentration:** 1mg/ml

**Swiss-Prot No.:** P12110

**Other Names:** alpha 2 type VI collagen, collagen alpha-2

**Storage/Stability:** Store at -20°C/1 year

**Form of Antibody:** Rabbit IgG in phosphate buffered saline (without Mg<sup>2+</sup> and Ca<sup>2+</sup>), pH 7.4, 150mM NaCl, 0.02% sodium azide and 50% glycerol.

**Immunogen:** The antiserum was produced against synthesized peptide derived from internal of human Collagen VI  $\alpha$ 2.

**Purification:** The antibody was affinity-purified from

rabbit antiserum by affinity-chromatography using epitope-specific immunogen.

**Specificity:** Collagen VI  $\alpha$ 2 antibody detects endogenous levels of total Collagen VI  $\alpha$ 2 protein.

**Reactivity:** Human, Mouse

**Applications:** WB: 1:500~1:3000 IHC: 1:50~1:100

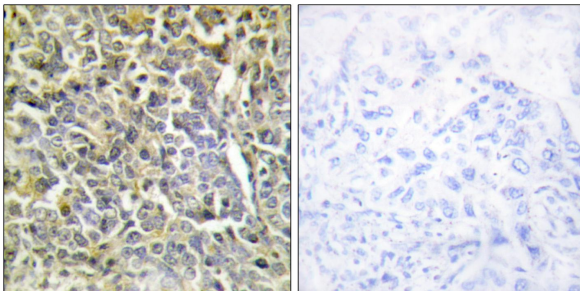
ELISA: 1:10000

**References:**

The MGC Project Team, Genome Res. 14:2121-2127(2004).

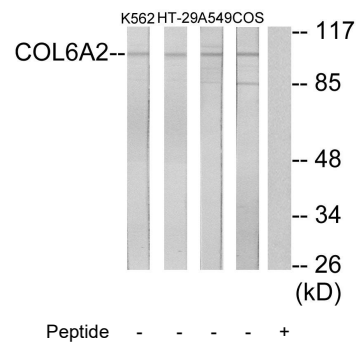
Saitta B., J. Biol. Chem. 267:6188-6196(1992).

Tillet E., Eur. J. Biochem. 221:177-185(1994).



Peptide - +

Immunohistochemistry analysis of paraffin-embedded human lung carcinoma tissue using Collagen VI  $\alpha$ 2 antibody.



Western blot analysis of extracts from K562 cells, HT-29 cells, A549 cells and COS-7 cells, using Collagen VI  $\alpha$ 2 antibody.