



Web: [www.anbobio.com](http://www.anbobio.com)  
[www.dijibio.com](http://www.dijibio.com)  
Order: [order@dijibio.com](mailto:order@dijibio.com)  
Tel: (86) 519 8805 0026

## LAMA5 Antibody [#C13068]

**Catalog Number:** C13068

**Concentration:** 1mg/ml

**Swiss-Prot No.:** O15230

**Other Names:** Laminin subunit alpha-5; KIAA0533; KIAA1907

**Storage/Stability:** Store at -20°C/1 year

**Form of Antibody:** Rabbit IgG in phosphate buffered saline (without Mg<sup>2+</sup> and Ca<sup>2+</sup>), pH 7.4, 150mM NaCl, 0.02% sodium azide and 50% glycerol.

**Immunogen:** The antiserum was produced against synthesized peptide derived from internal of human LAMA5.

**Purification:** The antibody was affinity-purified from rabbit antiserum by affinity-chromatography using epitope-specific immunogen.

**Specificity:** LAMA5 antibody detects endogenous levels of total LAMA5 protein.

**Reactivity:** Human (Identities = 100%, Positives = 100%);  
Mouse (Identities = 92%, Positives = 100%)

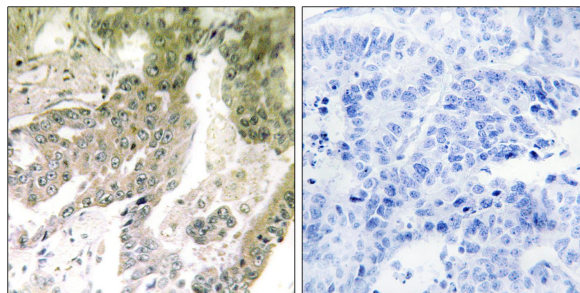
**Applications:** IHC: 1:50~1:100 ELISA: 1:20000

**References:**

Deloukas P., ure 414:865-871(2001).

Nagase T., DNA Res. 8:179-187(2001).

Nagase T., DNA Res. 5:31-39(1998).



Peptide

-

+

Immunohistochemistry analysis of paraffin-embedded human lung carcinoma tissue using LAMA5 antibody.