



**Web:** [www.anbobio.com](http://www.anbobio.com)  
[www.dijibio.com](http://www.dijibio.com)  
**Order:** [order@dijibio.com](mailto:order@dijibio.com)  
**Tel:** (86) 519 8805 0026

## LAMB1 Antibody [#C13069]

**Catalog Number:** C13069

**Concentration:** 1mg/ml

**Swiss-Prot No.:** P07942

**Other Names:** Laminin subunit beta-1 [Precursor],  
Laminin B1 chain, LAMB1

**Storage/Stability:** Store at -20°C/1 year

**Form of Antibody:** Rabbit IgG in phosphate buffered saline (without Mg<sup>2+</sup> and Ca<sup>2+</sup>), pH 7.4, 150mM NaCl, 0.02% sodium azide and 50% glycerol.

**Immunogen:** The antiserum was produced against synthesized peptide derived from C-terminal of human LAMB1.

**Purification:** The antibody was affinity-purified from rabbit antiserum by affinity-chromatography using epitope-specific immunogen.

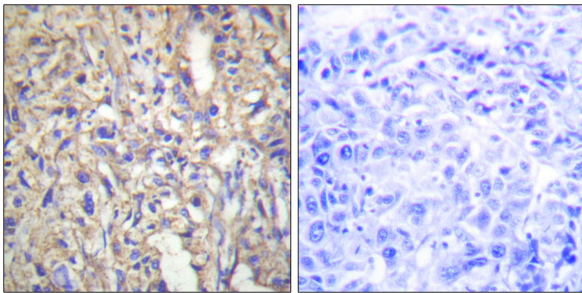
**Specificity:** LAMB1 antibody detects endogenous levels of total LAMB1 protein.

**Reactivity:** Human, Mouse

**Applications:** WB: 1:500~1:3000 IHC: 1:50~1:100  
IF: 1:100~1:500 ELISA: 1:10000

**References:**

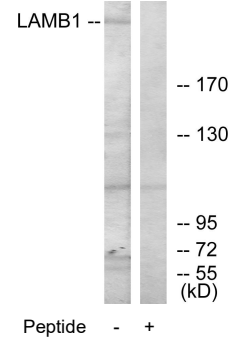
Vuolteenaho R., J. Biol. Chem. 265:15611-15616(1990).  
Pikkarainen T., J. Biol. Chem. 262:10454-10462(1987).  
Scherer S.W., Science 300:767-772(2003).



Peptide -

+

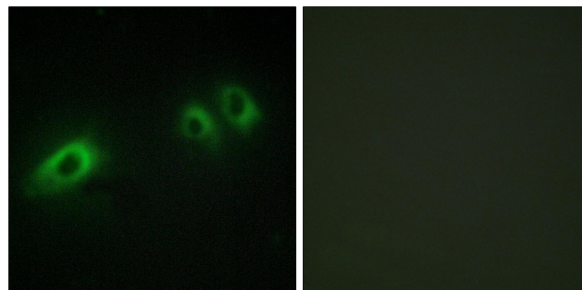
Immunohistochemistry analysis of paraffin-embedded human liver carcinoma tissue using LAMB1 antibody.



Peptide -

+

Western blot analysis of extracts from HepG2 cells, using LAMB1 antibody.



Peptide -

+

Immunofluorescence analysis of HeLa cells, using LAMB1 antibody.