



Web: www.anbobio.com
www.dijibio.com
Order: order@dijibio.com
Tel: (86) 519 8805 0026

LAMC3 Antibody [#C13074]

Catalog Number: C13074

Concentration: 1mg/ml

Swiss-Prot No.: Q9Y6N6

Other Names: Laminin subunit gamma-3, Laminin 12 gamma 3 subunit

Storage/Stability: Store at -20°C/1 year

Form of Antibody: Rabbit IgG in phosphate buffered saline (without Mg²⁺ and Ca²⁺), pH 7.4, 150mM NaCl, 0.02% sodium azide and 50% glycerol.

Immunogen: The antiserum was produced against synthesized peptide derived from internal of human LAMC3.

Purification: The antibody was affinity-purified from rabbit antiserum by affinity-chromatography using epitope-specific immunogen.

Specificity: LAMC3 antibody detects endogenous levels of total LAMC3 protein.

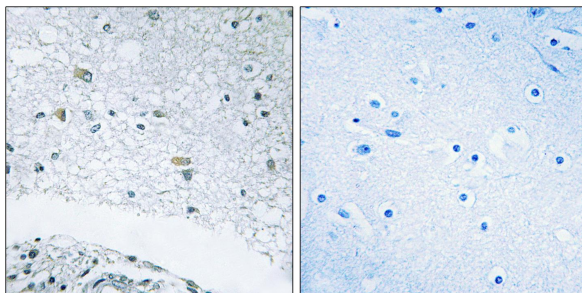
Reactivity: Human (Identities = 100%, Positives = 100%);
Mouse (Identities = 85%, Positives = 100%)

Applications: IHC: 1:50~1:100 IF: 1:100~1:500
ELISA: 1:40000

References:

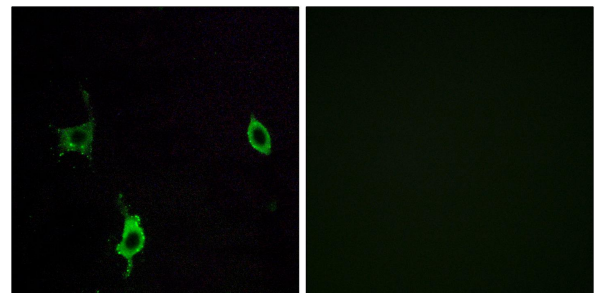
Koch M., J. Cell Biol. 145:605-618(1999).

Humphray S.J., Nature 429:369-374(2004).



Peptide - +

Immunohistochemistry analysis of paraffin-embedded human brain tissue using LAMC3 antibody.



Peptide - +

Immunofluorescence analysis of LOVO cells, using LAMC3 antibody.