



Web: www.anbobio.com
www.dijibio.com
Order: order@dijibio.com
Tel: (86) 519 8805 0026

LGALS1 Antibody [#C13075]

Catalog Number: C13075

Concentration: 1mg/ml

Swiss-Prot No.: P09382

Other Names: 14 kDa laminin-binding protein; 14 kDa lectin; Beta-galactoside-binding lectin L-14-I; DKFZp686E23103; Gal-1; GAL1; Galaptin; galectin 1; Galectin-1; GBP; HBL; HLBP14; HPL; Lactose-binding lectin 1; Lectin galactoside-binding soluble 1; lectin, galactoside-binding, soluble, 1; LEG1; LGALS1; Putative MAPK-activating protein PM12; S-Lac lectin 1

Storage/Stability: Store at -20°C/1 year

Form of Antibody: Rabbit IgG in phosphate buffered saline (without Mg²⁺ and Ca²⁺), pH 7.4, 150mM NaCl, 0.02% sodium azide and 50% glycerol.

Immunogen: The antiserum was produced against

synthesized peptide derived from Internal of human LGALS1.

Purification: The antibody was affinity-purified from rabbit antiserum by affinity-chromatography using epitope-specific immunogen.

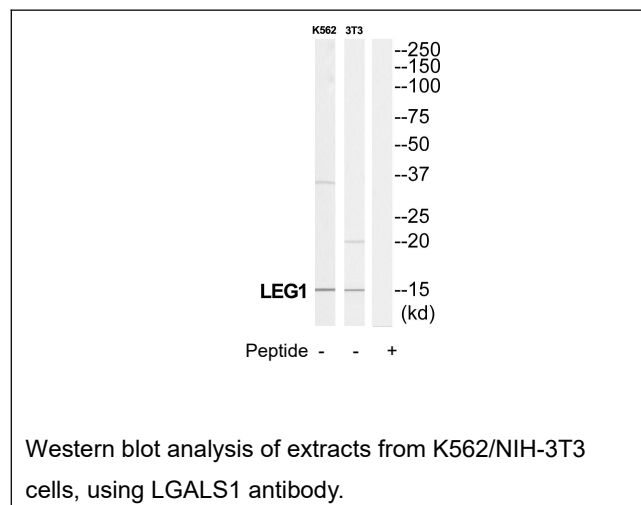
Specificity: LGALS1 antibody detects endogenous levels of total LGALS1 protein.

Reactivity: Human; Rat

Applications: WB: 1:500~1:3000 ELISA: 1:40000

References:

Hirabayashi J., *Biochim. Biophys. Acta* 1008:85-91(1989).
Couraud P.-O., *J. Biol. Chem.* 264:1310-1316(1989).
Abbott W.M., *Biochem. J.* 259:291-294(1989).



For Research Use Only