



Web: www.anbobio.com
www.dijibio.com
Order: order@dijibio.com
Tel: (86) 519 8805 0026

LEG4 Antibody [#C13077]

Catalog Number: C13077

Concentration: 1mg/ml

Swiss-Prot No.: P56470

Other Names: Galectin-4, Lactose-binding lectin 4, L-36 lactose-binding protein, L36LBP, Antigen NY-CO-27, LGALS4

Storage/Stability: Store at -20°C/1 year

Form of Antibody: Rabbit IgG in phosphate buffered saline (without Mg²⁺ and Ca²⁺), pH 7.4, 150mM NaCl, 0.02% sodium azide and 50% glycerol.

Immunogen: The antiserum was produced against synthesized peptide derived from internal of human LEG4.

Purification: The antibody was affinity-purified from

rabbit antiserum by affinity-chromatography using epitope-specific immunogen.

Specificity: LEG4 antibody detects endogenous levels of total LEG4 protein.

Reactivity: Human

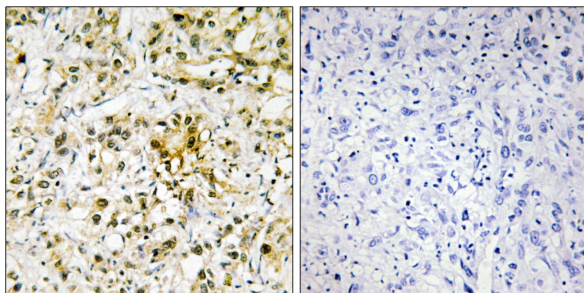
Applications: WB: 1:500~1:3000 IHC: 1:50~1:100
ELISA: 1:20000

References:

Rechreche H., Eur. J. Biochem. 248:225-230(1997).

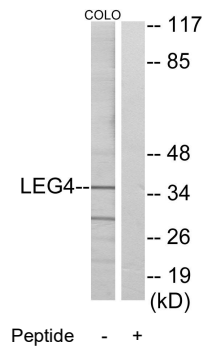
Huflejt M.E., J. Biol. Chem. 272:14294-14303(1997).

The MGC Project Team, Genome Res. 14:2121-2127(2004).



Peptide - +

Immunohistochemistry analysis of paraffin-embedded human liver carcinoma tissue using LEG4 antibody.



Peptide - +

Western blot analysis of extracts from COLO cells, using LEG4 antibody.