



Web: www.anbobio.com
www.dijibio.com
Order: order@dijibio.com
Tel: (86) 519 8805 0026

LEG8 Antibody [#C13079]

Catalog Number: C13079

Concentration: 1mg/ml

Swiss-Prot No.: O00214

Other Names: Galectin-8, Gal-8, Prostate carcinoma tumor antigen 1, PCTA-1, Po66 carbohydrate-binding protein, Po66-CBP, LGALS8

Storage/Stability: Store at -20°C/1 year

Form of Antibody: Rabbit IgG in phosphate buffered saline (without Mg²⁺ and Ca²⁺), pH 7.4, 150mM NaCl, 0.02% sodium azide and 50% glycerol.

Immunogen: The antiserum was produced against synthesized peptide derived from internal of human LEG8.

Purification: The antibody was affinity-purified from

rabbit antiserum by affinity-chromatography using epitope-specific immunogen.

Specificity: LEG8 antibody detects endogenous levels of total LEG8 protein.

Reactivity: Human, Mouse

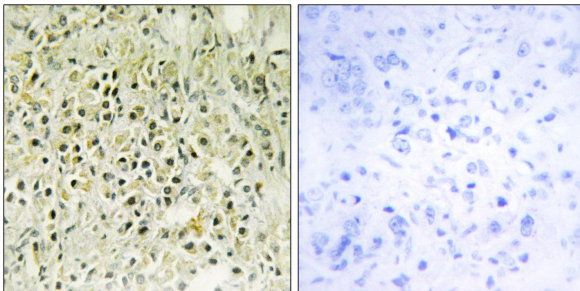
Applications: WB: 1:500~1:3000 IHC: 1:50~1:100
ELISA: 1:20000

References:

Su Z.-Z., Proc. Natl. Acad. Sci. U.S.A. 93:7252-7257(1996).

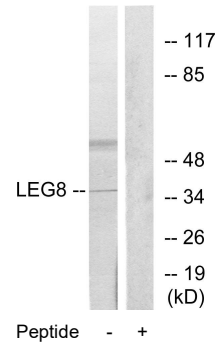
Hadari Y.R., Trends Glycosci. Glycotechnol. 9:103-112(1997).

Gopalkrishnan R.V., Oncogene 19:4405-4416(2000).



Peptide - +

Immunohistochemistry analysis of paraffin-embedded human prostate carcinoma tissue, using LEG8 antibody.



Peptide - +

Western blot analysis of extracts from 3T3 cells, using LEG8 antibody.

For Research Use Only